



Inside



Over half the country may have had COVID. See page 6.



Flooding at Inaha which closed SH45 in the recent rain. Page 7



Why water reforms are needed. page 8.



National arts position for Manaia artist. See page 11.



Book launch. pages 12-13

Local news, local people, local businesses, local sport, local arts and events. Delivered free around the mountain every fortnight.



editorial@opunakecoastalnews.co.nz
ads@opunakecoastalnews.co.nz
accounts@opunakecoastalnews.co.nz

Phone: 06 761 7016

23 Napier St, Opunake

What's with our water

South Taranaki District Council chief executive Waid Crockett has apologised to Opunake residents following recent complaints about the state of the town's water supply.

Last week Taranaki Coastal Community Board member Liz Sinclair had turned up to the board's August 16 meeting with a container of recently collected Opunake tap water.

"Not only is it dirty brown, but there are floating bits. It's not acceptable in this day and age," Liz told the meeting. "I'm not in favour of Three Waters, but when we have water that appears like that,

it's not a good advertisement for the anti -Three Waters cause."

She said there had been a number of recent complaints from people in Opunake about the water that was coming out of their taps, with some describing the colour as "pooh brown." Although there have been problems like this in previous times following bad weather, the latest complaints had been made after an unusual spell of fine weather.

"I understand there's no easy fix, but one of the things that's unsettling is the flow of information," said Liz. "People are asking whether

the water is good enough to drink, and the Council has said yes, because it's chlorinated."

In a statement issued on Thursday August 18, South Taranaki District Council chief executive Waid Crockett apologised for what had happened.

"I'm very sorry for the incident, it was unacceptable and frustrating," he said. "We know there are issues with periodic discolouration of water and have set aside \$3.3 million in our 2021-31 Long Term Plan to upgrade the plant, improve the taste, odour and discolouration issues, increase storage and improve the supply," he says.

At the Community Board meeting, South Taranaki District mayor Phil Nixon said the council would be looking for the cause of this latest event. He said water is tested and chlorinated to make sure that it's safe..

"If we end up in Three Waters I'm suspicious about where the priorities are going to be. Is water in Hamilton or Tauranga going to be more important than water in Opunake? That's what worries me."

Community board chair Andy Whitehead quoted the words of a former community board member.

"If Brian Vincent was here he would say we need a pond to store water for when you have an event," he said.

In the statement issued after the meeting Waid Crockett said the Council are investigating what caused the



Water that came out of a tap at an Opunake resident's home last week. Photo: Trudie

recent discolouration which happened after a period of cool weather on the mountain when typically there is a release of metals into the river water.

"The discolouration happens because of where Opunake's water is sourced. The head waters of the Waiaua Stream are high up in the exposed scree slopes of Maunga Taranaki/Mount Taranaki which experiences frequent erosion and flooding. The material from the mountain also carries a lot of naturally occurring iron

and manganese which flows down to the catchment, where the Council takes the water for treatment. In a dissolved form these metals tend to pass through the existing treatment process, that has a clarifier, membrane filters and then the water is treated with chlorine, which ensures it is safe to drink. These dissolved metals are oxidised by the chlorine disinfectant that occurs at the end of the process. Once oxidised, the metals accumulate in tanks

Continued page 3

Three accused plead not guilty to murder

Two men and a woman have all pleaded not guilty to a charge of murder and related crimes; the victim was farm worker Jacob Ramsay (33) whose body was discovered at an Upper Kina Road, Oaonui property on Sunday July 31.

The accused are William Candy (39), Ethan Webster (18) and Jodie Shannon Hughes (30). All three live in Upper Kina Road with William Candy and Jodie Shannon Hughes living at the same address.

William Candy faces charges of kidnapping and murder, Ethan Webster faces a murder charge while Jodie Hughes faces three charges which include kidnapping, murder and also burglary.

The trio appeared (The two men by audio-visual link from Whanganui Prison, with Jodie Hughes on remand from Arohata Prison) at the New Plymouth Court on Friday August 19. Jacob Ramsay's wife Sarah was present to hear the not guilty pleas, along with other family members and supporters of Jodie Hughes).

Justice Rebecca Ellis granted media applications for photographs to be taken of the accused.

The accused were remanded in custody before a case review hearing scheduled for October 21.

Justice Ellis advised that a possible trial date would be August 14 2023, with three weeks as the likely duration of proceedings.



The victim and the accused all lived on Kina Road.



Letters to the Editor

Send your your views to:
Letters to the Editor
23 Napier Street, Opunake.
Fax: (06) 761 7016
email: editorial@opunakecoastalnews.co.nz
You are welcome to use a pseudonym but must supply your name and address to us.

“Let’s create your business growth strategy together”
Your only local community accounting firm



HUGHSON & ASSOCIATES

Accounting for the future, today

Hawera - Opunake - Patea - 06 278 4169
Opunake Office hours:
Mon & Thurs: 9am–3pm, Wed: 10am–3pm



- CHARTER BUSES
- VANS
- TOUR BUSES

ALUMINIUM SCAFFOLDING FOR HIRE

\$35 per day, \$50 weekend.
More than 6 days \$30 per day.

WATERBLASTER FOR HIRE

Petrol 3000 psi 15L/minC
Cost: Half day \$90, Full day \$120, Weekend \$130. Friday after 3pm return Monday 9am.
Bond for waterblaster and scaffolding \$50.
For more information contact Tracey or Christine at

PICKERING MOTORS

11 TENNYSON ST OPUNAKE PH (06) 761-8363
0800 22 11 20 Email: pickering.motors@xtra.co.nz

OPUNAKE & COASTAL NEWS

Registered office: 23 Napier Street, PO Box 74, Opunake
Phone: Office (06) 761-7016, A/h (06) 761-8206
For advertising, email: ads@opunakecoastalnews.co.nz
For editorial, email: editorial@opunakecoastalnews.co.nz
For accounts, email: accounts@opunakecoastalnews.co.nz
www.opunakecoastalnews.co.nz
Editor: Bernice McKellar
Journalists/Sales: Rolland McKellar, Bryan Kirk
Advertising/Production: Vanessa Smith
Production/IT: Shane Butler
Delivery: Thursday, fortnightly
Registered as a newspaper.
Member of the Community Newspapers Association of New Zealand



The Opunake and Coastal News is distributed free to every home and business within the rural area bounded in the north by the New Plymouth city border, extending east to Egmont Village, and around to the edge of Stratford, south to the Hawera city border and inland to Kaponga and through Eltham.

While we welcome free speech, the views expressed in the Letters to the Editor do not necessarily reflect those of the Opunake & Coastal News. Please limit letters to 350 words as we sometimes struggle for space to fit them all in.

All Blacks

I am somewhat pleased with the All Black’s win in the last test with South Africa but hope it in no way helps Foster the Imposter to retain his position. The AB’s showed a long way better defensive showing and attacking move, far better than in their latter games and in no way gives credit to for the AB’s improved play but maybe to the new Forwards coach whose name does not come to mind. When some of the AB players were given an interview on TV they say they support Foster but of course what else would they say if God or someone else keeps Foster in his present position I say God forbid. I would invite those responsible if Foster keeps his position to get into your spaceship and get back to fairyland. The standing down of Plumtree from the Selector group instead of he is in charge is a case of ‘shoot the messenger’. The captain is a good player but I have reservations of him holding that position. Two of the future selectors knowing there could be others are ‘Razor’ Robertson as his record with Canterbury has been very good as with Plumtree’s when with the Hurricanes. The AB’s I believe now sit 6th or so on the World standings, so “Foster the Imposter” go, go, go and take your NZRU supporters with you to give Putin in

Russia your help which may help in Putin’s demise. I will weep into my G&T if Foster stays. Kia Tau Te Rangimarie Gordon ‘Mac’ Sole. Hawera

PS:What a non- shock that the NZ’ so called Rugby Union has not had the intestinal fortitude to get rid of “Foster the Imposter” thereby clearing the desk for a new era in NZ rugby. Maybe it’s a case of those on the Union wish to hold onto their positions instead of rugby sanity. I find my next comment hard to write as I have in the past always been an avid rugby and All Black supporter, but I now want the AB’s to lose all their games until Foster goes. Foster should have the honesty to resign with his record, but he being weak gutted that will not happen. May the Rugby Gods forgive me for my present thoughts, as my thought of Foster borders on hate for his damage to NZ.

A Towering Talent: Reflections of Ronald Hugh Morrieson

Dear Rolland
Thank you very much for sending me a copy of your Morrieson biography. I have given it a quick preliminary read and I’m impressed with the way you have brought Ronald Hugh Morrieson to life. Later, I will read it more closely. The text and illustrations are lively and evocative, especially Bernice’s front and back cover drawings. Actor and poet Peter Bland of Came A Hot Friday fame is a good friend of mine, so he will be pleased I know to see himself in the book and read it. It was also a pleasant surprise for me to read that Malcolm and Moorie Robinson were friends of Ron. They were also close

ADELPHOS

What happens after we die? In our increasingly secularized nation many believe that we enter into a nothingness after death. This isn’t an uncommon view. When asked for evidence, the topic often segways into the day’s weather. It’s like there’s a conscious denial of thinking about death. However Irvin Yalom, an eminent psychiatrist, tells us in his book, (Staring at the Sun: Overcoming the Terror of Death, 2009), that we are reminded of death either subconsciously or consciously about 15 times daily. There are also different explanations about life after death. Popular beliefs include reincarnation: The idea that death is a rebirth through Karma as in Buddhism and Hinduism. Here, one’s behaviour in this life and previous lives determines the quality of a future life. If someone lived self-sacrificially doing good works then he/she will attain a much better future life. If not, they may return as some lower animal species. With reincarnation, some claim to be famous people in world history in their past lives. No evidence in the Bible supports reincarnation. Holistically, people are composed of three parts— our body, soul (or unique personality) and spirit. From a Christian perspective when we die our spirit and body are separated as the Christian’s spirit departs to God for a waiting period in heaven (Philippians 1:21, 2 Corinthians 5:8, Revelation 6:10). We will not stay in this waiting state forever in heaven as is often depicted in art. You know, eternally floating around with angels on marshmallow clouds. At the resurrection, God will reunite our spirits waiting in heaven with a newly created body and soul. Then we will eternally live in the recreated new heaven and earth (Revelation 21:1-4). The Bible does not say much more, but, that our afterlife will be beyond our greatest expectations (1 Corinthians 2:9, 1 John 3:2). Jesus died to “offer” believers in Him eternal

So what about death?

life to free their souls from the bondage of an eternal spiritual death caused by sin (Romans 3:23, Revelation 14:11, Romans 5:12). This “offer” was achieved through His death and resurrection only if we accept that offer (John 11:25). In contract law, as in Jesus’ offer of salvation, an offer must be accepted to become a binding agreement. Robert Niemeyer, a world leading psychologist, says that death causes us to instinctively search for two things: making meaning and making sense. Jesus’ promise of an afterlife can help make meaning and sense of who we are, where we are going and how to get there. For the believer, death is not the end but the beginning. Manaakitanga


Adelphos

Deadlines for copy

We find we are working very late on a Tuesday night to put the paper together for it to be at the printers first thing Wednesday morning. Our deadline for copy is Monday 10am. This gives us an opportunity to proofread the copy. We continue to receive a lot of material on Tuesday and are struggling to process it all as well as put together the paper. If you have trouble meeting this deadline can you let us know. This deadline does not apply to the Cops and Fire Service columns where incidents can occur on the Monday and Tuesday. We do appreciate your contributions, so thank you in advance for your co-operation.

Editor

Opunake & Coastal News Paste Up Night



More Opunake & Coastal News’ out

We have printed more copies of the Opunake & Coastal News.

It is available on stands at the following locations

New Plymouth:
Ate Forty One, Tukapa St, Westown
Challenge Spotswood
The Health Shop on the ground floor at Centre City
The Store, Cnr Tukapa St & Wallath Rd

Waitara:
Outside the North Taranaki Community House Trust, 67 McLean St

Inglewood:
Inglewood Book Centre, 31 Rata St

Stratford:
Stratford Knit & Sew, 202 Broadway
First National, Stratford.

Eltham:
Eltham Four Square

Hawera:
Outside First National, Cnr of Victoria and High Streets
Outside Nursery Rhyme, 158 High St
Papers are also available at
The Sunshine Dairy, Hawera
The Normanby Dairy
Swetes Dairy, Manaia
Pastimes in Opunake
Tim’s Barbershop, Moturoa
Okato Takeaways



friends of my parents, in Opunake. Very good people. I hope the Hawera launch of the book went well. I'm sure it generated great interest in the book. I presume you have sent review copies of A Towering Talent out to media people. If you do, make sure you include The Listener, as it has a wide readership of book lovers. The person there to contact is Mark Broatch, who I know well. Congratulations on producing such a fine tribute to a truly remarkable writer.

Graeme Lay, Auckland (email).

Award-winning author Graeme Lay spent his formative years in Opunake. He was the judge in the Short Story competition of the Opunake Sesquicentennial celebrations in 2015.

The local elections are upon us

"The time has come", the walrus said, "to talk of many things" - if I may borrow a line or two of Lewis Carroll's literary

skills. It is indeed, for that time has come, for local body elections, and to talk of many things. The three-year term is drawing to a close on October 8th 2022, elections will be held again to determine mayors, councillors, and community board personnel. I am standing again for a position on the Eltham/Kaponga Community Board and I would once again, be pleased to have your vote. Thank you. How have I found the last three-years you ask? One word would encompass the answer - "challenging". "You'll be a yes man" were the words directed to me three years ago. My reply "You don't know me very well then." So yes, I've stood, as I started, resolute-determined to represent the people, to lend a voice, to discuss and endorse decisions I agreed with, and also to voice and stand against those I didn't. As I stated three years ago, I'm here primarily for the people to represent their opinions, wants, needs, endeavours and goals for the towns and districts of Eltham and Kaponga. I have had

some harrowing experiences in these three years, some coming from where I had least expected whilst endeavouring to help people in a situation where they needed help or advice. So why stand again? The answer – nothing's changed. I'm still here for the people, to represent honesty, integrity and justice. Have I been rewarded? "Yes" by the people I have been able to help. Their gratitude and thanks, however small the matter concerned, has made it worthwhile. I guess I've gained some valuable insight over the last three years and like the walrus, my hide and tusks (in a manner of speaking) have grown stronger and wiser to be able to stand and defend with more vigour another term on the board to once again, as the walrus said "to sit down and talk of many things" on your behalf for the people within the Eltham/Kaponga Ward. So please vote tick for Lindsay Maindonald. Thank you.

Lindsay Maindonald Eltham

Track access still closed

The access to the Boars Head Mine and the Captain Capel Mine is still closed which goes through a farmer's

property. It is a huge concern to me and many other Egmont National Park/ Te Papakura o Taranaki users that these Taranaki historic icon places have not been available to the public since early in the year. This is yet another of Taranaki's tracks which allow locals and visitors from other parts of New Zealand to do a short walk into the unique coastal vegetation, especially after the White Cliffs Walkway access was closed. As far as I am aware there has been no reason given for the access being closed off?

Ian McAlpine New Plymouth



Track access still closed.

Support not abort

I commend Murray Baylis for voicing his thoughts on Roe v Wade, which were recently published here. The voice for the unborn takes quite a back seat in our country, but there is the odd one standing up for those who cannot yet speak for

themselves. And there is help for those who are being pressured into having an abortion. There are helpful sites online where one can find support during a pregnancy and advice for an unwanted baby, such as: [Crossfoundationblog.wordpress.com](https://crossfoundationblog.wordpress.com) and [Aboutabortionnewzealand.wordpress.com](https://aboutabortionnewzealand.wordpress.com) Every baby that has been aborted has a living soul and has gone into eternity, as will you and I.

Lisa Collihole Eltham

Water

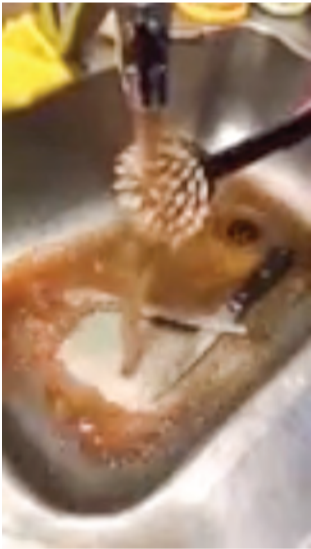
I wish to outline some views on how money is wasted in Central and Local Government and to shed some light on other alternatives. Water is on the agenda at present here in Opunake as well as the three waters. Let's address some issues that affect the people in not only Opunake but other areas of South Taranaki. When I was a councillor I wrote an article about people getting sick from bad water and the fact that several people had ended up in hospital. I was duly pulled aside and reprimanded. My response was that I could provide names addresses and details of hospital visits. The matter was quickly dropped

Around that time a halt was put in place by the government to bore for oil and gas. This left a number of boring contractors looking for any kind of work for really cheap rates to bore for water here in Opunake. Unfortunately they moved on and an opportunity was lost. O'puna'ke means underground streams so it makes sense to drill for fresh clean water instead of trying to make something better than has never worked. Let's be brief and say that Council engineers are taught that only chemicals can be used to treat water which is why water treatment is so expensive. I guess it would be unfair to point out that most universities rely on major sponsors who expect some return. The current plans are to spend 3.5 million dollars over the next few years depending on the long term plan which could be ten years or more to try and fix a problem they can't fix. What is the answer? The average farmer has been forced in many cases to bore for water at a cost of around \$25,000. If Council undertook this work it would be around \$200,000 per bore which I found very difficult to deal with when I was a councillor. So if we drilled six bores before striking good water at \$1.2 million we would not only have good quality water but we would also be \$2.3 million dollars better off. Better still we could install a totally safe chemical free treatment station for less than \$500,000 with a yearly cost of less than \$10,000 per year for supplies. When you consider that many people on pensions and fixed incomes are spending over 10% of their income on rates, that figure should be closer to 5%. You will see that the lack of thought and accountability of councillors plus their unwillingness to study and ask questions means we are not well supported. It is even worse for our farmers and rural folk who have to contend with poor roads and communication facilities.

What's with our water

Continued from page 1

and reservoir before water passes to consumers. These metals are not always fully captured during periods of high water use and can be carried into the piped network and then build up on the inside of the pipes to create a film as water runs through the network. When there are flow changes within the pipes the films can dislodge to cause discoloration, along with fine particles which may sometimes be noticed. He said the Council had completed a \$420,000 upgrade of the water treatment plant to reduce the amount of sand accumulating in the intake. Contractors are conducting localised flushing



Washing dishes in this....

to remove discoloured water from the network, and more samples would be taken.



...Or yourself in this.

Photos: Michelle Coxhead

"Due to the nature and complexity of where we source Opunake's water it is not going to be an immediate fix," says Crockett. "However, we have a plan in place and while we are waiting for this work to be completed, we will increase the amount of water quality monitoring within the network and the frequency of the town-wide flushing to minimise the effects." "Over the last three years, we have also conducted a town-wide flush of the network in September. As a result of what happened in the weekend, we are bringing that scheduled work forward and it will be started before the end of this month."

Continued page 4



manorbuild
building the future

 **PRE-BUILT HOMES**  **FAST**  **HIGH SPEC**

0800 626 672 | www.manorbuild.co.nz





Letters to the Editor

Continued from page 3

Unfortunately we won't be able to ask questions and debate issues this election due to a lack of interest in younger people wanting to become councillors.

Maybe it is time to set up an organisation to keep tabs on what is happening'

Clem Coxhead
Opunake

When and how to print money

Money creation by the Reserve Bank has been rightly blamed for contributing to our high inflation rate, but this is because the money has gone to the wrong sector of our economy.

Through quantitative easing (also known as Large Scale

Asset Purchases or LSAP) the Reserve Bank created \$55 billion and pumped it into an overstimulated financial market.

Surprise, surprise the cost of housing and other assets took off, along with banks' profits. As the housing market was already overstimulated, the new money contributed to about one-third of the increase in annual inflation.

This was not a good way to use the newly-created money if the Reserve Bank was to fulfil its mission, "to enable economic wellbeing and prosperity for all New Zealanders".

The Government also provided a \$30 billion line of credit to the banks to lend to individuals and businesses. The intention was for the banks to provide stimulus to the real economy. The predictable problem was that businesses were reluctant to take on additional debt in times of uncertainty.

Add to that the banks could make more profit from the housing market and unless businesses could put housing as collateral, most missed out. Again, poor use of money creation by our Reserve Bank.

A wiser use of money creation would be for the Reserve Bank to provide it for infrastructure projects to fix our failing roads, schools, hospitals and three waters.

This option has been referred to as Direct Monetary Financing or Quantitative Easing for the People. Some pundits say it will be inflationary, but a Levy Institute paper titled, "Is Monetary Financing Inflationary? A Case Study of the Canadian Economy, 1935-75" <https://www.parliament.nz/www.levyinstitute.org/pubs/wp_848.pdf> found no support for a relationship between direct monetary financing and inflation.

For forty years the Canadian Central Bank funded the construction of highways, airports, bridges, schools, hospitals, and other infrastructure with little or no impact on inflation.

Our own Reserve Bank used a similar approach to fund the construction of thousands of state houses in the 1930s which helped bring New Zealand out of the Great Depression.

Our Reserve Bank should stop providing money to our privately owned banks and put the money to work for the benefit of all New Zealanders. We also face a bigger bill in the form of climate change

remediation. Direct Monetary Financing will enable us to meet this threat without saddling future generations with a mountain of debt.

Don Richards
National Spokesperson for
Positive Money New Zealand

Vaccines

Question. If it was well publicized that certain companies had proven themselves over the years to be serious repeat criminal offenders, said to have engaged in activities like bribery, blackmail, racketeering and fraud (to name a few) which had resulted in those companies being heavily fined for those actions - would you deem it wise or even sane to consider then doing business with any of them?

Try this one then. You're the elected leader of a country and a drug company with a proven history of corruption, deceit and with ethical standards clearly lower than a pregnant snake's belly - one that you knew full well had previously received what was at the time the biggest fine in the industry's history of 2.3 billion US dollars for allegedly misrepresenting products and paying kickbacks to doctors - tells you their latest and one of the quickest ever developed "vaccines" is safe and effective. Would you be dumb enough to believe that? And would you then, as a condition of sale and without the knowledge or consent of the citizens of your country that you intend to force this experimental concoction on (whose money it is you're handing over) then guarantee that company zero legal liability just in case it wasn't, well, anywhere near as safe as claimed? Or even remotely effective?

Ours apparently would. And did.

A Concerned Kiwi
Eltham

Our world in jeopardy

Many people no doubt have been grinning behind my back and mumbling 'mad as a rabbit', or 'conspiracy theorist' or whatever.

Recent 'Bombshell Breaking News' should cause some of these people to reconsider any criticism.

Fact Number 1. Dr Andreas Noack, an Austrian Chemist and the only European specialist in the study of carbon related graphene

oxide and graphene hydroxide, released information proving that the Pfizer injections mandated worldwide for the so called pandemic contained Graphene Hydroxide.

His paper explains that these miniscule particles are like razor blades and are very mobile. If injected into the blood, near instant death will occur. Injected into the tissue, things will take longer and several outcomes are possible.

I have a copy of the release of his work on demand.

He declared this information urgently calling for a halt to all of the injections in late 2021.

He declared any continuation of the injecting to be 'mass murder'. He declared the MRNA discussion to be somewhat of a distraction.

Just hours after publishing this work, the 'powers to be', decided to end his life.

Fact Number 2. Dr Pablo Campra proved that graphene hydroxide is in all four of the main producers of Covid 19, so-called, inoculations. Later Dr Perdo Chavez Zavala proved that the inoculations actually cause a bluetooth recognition in the jabbed individuals and also bluetooth recognition in those who had not been jabbed but who had received a PCR Test. Those who had not been jabbed and had not had a PCR test had no bluetooth recognition.

So the reason for the corrupted World Governments who pushed these inoculations was partly to introduce the ability to monitor the population and who knows what else!

The PCR tests have proven to be totally unreliable to the point of something like 95% false positive and were an intrusion of the human body. The inventor of the tests died mysteriously after declaring the tests were of no use when used to identify a virus, because they could not differentiate between a live or dead virus.

The reason for introducing these tests worldwide, is now clear. The swabs contained graphene nanoparticles, and these were inserted up the nasal passage past the point of natural human immunity protection, to deliver these nanoparticles which no doubt end up in the brain of the individuals.

Consider this;
COVID-19= Certificate of

Vaccination, ID, 2019.

Consider the following CORONA. C = 3rd letter of alphabet. O = 15th. R = 18th. O = 15th. N = 14th. A = 1st. Six letters and adds up to 66 = 666 = devils number.

We all need to wake up.

Almost all of the Governments around the World have been infiltrated by individuals who are following the path set by the WEF. Even the main opposition parties have been affected.

These people have also infiltrated and corrupted the WHO, the UN, the IMF to name but a few.

Klaus Schwab wrote a book exposing his nefarious plan and it is there for us all to see.

Evil is the intention of these people. They intend to reduce the world population to an ideal level of 500 million people. It is in the book. They have been planning this for many, many years.

Jacinda Ardern, Chris Hipkins and Grant Robertson were all at the WEF together.

I heard recently that Chris Luxon was involved as well. Scott Morrison is another and Albanese will be one as well.

Boris is one, Macron, Biden, Germany's leaders past and present, Italy, Holland, with Trudeau the worst of all. They are everywhere and so well organised it is scary. Diabolical.

In New Zealand now we have Bloomfield mandating fluoride on his way out. Recently I watched a presentation by Dr Vivyan Howard at Otago University which showed categorically that fluoride added to the water when women were pregnant affected the IQ of the fetus detrimentally. I knew it was considered very questionable for adults as it can reduce the memory and imagination of individuals. Who knows it may be the trigger for the increases in Alzheimers and Dementia. And yet we are confused by the science enough to mass medicate the population to benefit a few malnourished children.

Now they want to forcibly take over our water supplies etc.. Let them have the sewerage, but our potable water, not likely. Then they could medicate us with whatever.

This is war. wake up.

We must stand our ground and fight this tyranny.

Alan Murray
Ohawe

On this month in history Christopher Columbus sails for the spice islands

On August 3, 1492 Christopher Columbus set off for the (so called) spice islands of the Far East that Marco Polo had opened by overland route from Europe.

Columbus' ships included the Santa Maria (which he was on), the Nina and the Pinta and the exploration was commissioned by Spain's

monarchs Queen Isabella and King Ferdinand II.

Born in Genoa Italy, Columbus was well read in history, astronomy and geography and believed the world was spherical.

On October 12 he made landfall on an island in the Bahamas - the first contact of Europe with the Americas

(Although some scholars maintain Leif Erikson had preceded him).

Columbus made four voyages across the Atlantic and was given the title Admiral of the Ocean Sea.

He died on May 20, 1506 at Valladolid, Castile.

BUSY SERVICES

Lawn-mowing and property maintenance
Rubbish removals and odd jobs

Ph 020 4081 3063
busyservicesnz@gmail.com

Simple But Significant

a simple cremation & burials

Helping Taranaki families with a range of simple, professional funeral services. With affordable caskets, urns & jewellery.

0800 236 236 233 Carrington St
www.asimplecremation.co.nz New Plymouth

You can rely on us for your energy needs

www.rockgastaranaki.co.nz

Transform your home - all your hot water, space heating and cooking needs from your trusted local Rockgas supplier.

Count on us - reliable delivery of 45kg LPG cylinders to your home, business, or farm where ever you live.

Locally operated and proud to be part of your community

rockgas TARANAKI

Call Rockgas Taranaki
0800 LPG 2 YOU or 06 757 9264

CRAWFORD

AGRITECH Ltd

- TRACTOR & MACHINERY SERVICE & REPAIRS
- ON FARM SERVICING
- AIR CONDITIONING SERVICE, REPAIRS AND HOSE MAKING
- SPARE PARTS & FARM OILS
- IMPLEMENTS & ATTACHMENTS - SALES AND SERVICE
- FACTORY TRAINED TECHNICIAN
- TARANAKI & WANGANUI INDEPENDENT FERGIE TRACTOR SPECIALISTS

Ph 06 762 8023
Ian Crawford
Mob 0272 207 701

MASSEY FERGUSON | FORD | SAME | LANDINI | ISEKI | VALTRA | MATBRO
INTERNATIONAL | MERLO | DAVID BROWN | RENAULT | URSUS | JOHN DEERE

MORRIS LUBRICANTS
the winning formula since 1869

• Kitchens • Stairways • Vanities • Lounge Units • Bench Tops • And More

OKATO COP

Boundaries needed

Kia Ora Koutou,
I do hope that you all were not too badly affected by the torrential rain of late. We are in need of some sunshine to dry out, that's for sure.

I was talking to a rural colleague the other day and we discussed reporting, even small matters to Police. As we have seen with some major incidents around the coast in the past month, sometimes information that may seem insignificant to you may be the last piece required in a cog of information for the Police. More importantly, reporting small problems, or issues, and this might be problems that other agencies may be involved in rather than just Police, with some intervention, may avoid large problems occurring in



CONSTABLE MATT STONE

the future. I encourage you to contact the 105 reporting line, whether phone or online, or contact your local officer. I briefly want to discuss the effects of allowing your children to break rules, no matter how minor they might seem. If you have awareness that your child does not adhere to 'minor' rules or laws and you accept or allow this, you are then setting

your child on a negative path. Research tells us that young people need and thrive on boundaries. If they have the encouragement from parents or caregivers to break rules, they look for support from parent and caregivers when they get caught by authority, breaking those rules. Unfortunately, this

often leads to a snowball effect of, your child taking it upon themselves to take more risks, drive faster, carry more passengers, drive more often without licences, knowing that if they get caught they have the support of their parents/caregivers. This, therefore, means that the young person no longer

takes accountability for their actions, and will always look for the excuse.

So I ask you to say 'no' to your children more often when they ask to take the car when they don't have the appropriate licence, do not buy them vapes when underage, etc. Consistency,

in this type of parenting will lead to less conflict in later years. Until next time. Nga Mihi Matt

Matthew Stone
Sole Charge
Okato

Are those who never got Covid-19 now in the minority?

New Zealand's second Omicron wave might just be easing up, with the latest data showing we may be in a downward trend. So what do the latest data tell us about rates of infection in New Zealand?

Professor Michael Plank of Te Pūnaha Matatini and University of Canterbury said the true number of people who've had Covid-19 is unknown because we only know about cases who get tested and report their result. The proportion of infections that are reported is probably somewhere between 40% and 65% "This means it's likely that at least half of New Zealanders have had Covid-19, although those that haven't probably still represent a significant minority," he said. Professor Mike Bunce of ESR said the soon-to-be-conducted serology survey and modelling of this data, in



Which of these people have escaped Covid-19?

concert with hospitalisation rates and wastewater, would likely provide a more nuanced picture of the total number of Kiwis that have

been exposed to Covid-19. In the UK, such an approach revealed how 95 per cent of the population had been exposed to the virus, but

working out the 'true' number of infected (and reinfected) people would always remain a challenge, he said.

Possible solutions to forever chemical problems

International scientists have found a promising new way to break down substances containing harmful 'forever-chemicals,' called per- and polyfluoroalkyl substances (PFAS).

These persistent pollutants

are used to make waterproof and stainproof fabrics and containers, firefighting foam, and non-stick pans, and they're accumulating in water supplies worldwide.

Chronic exposure to

these chemicals, even at low levels, is associated with thyroid disease, liver damage, high cholesterol, cancers, reduced immune responses and low birth-weights.

The new technique to break

them down is less energy-intensive and less expensive than existing methods, and works by degrading the PFAS-containing substance into harmless fluoride ions.

Garage Doors Specialists

WINDOWS • DOORS • CONSERVATORIES

- Sectional, Roller, Tilt.
- Automatic Openers
- Repairs & Maintenance

Call for a Free Measure & Quote
Email: sales@rylocknp.co.nz | Ph. 06 758 8073

Rural & Agribusiness

Looking to maximise the value of your farm or Lifestyle property?

We offer LOCAL presence, NATIONAL exposure and true INTERNATIONAL reach. Ask us how we can also support your local community.

Dean File
Rural Sales Advisor
021 544 364

Lea File
EA to Dean File
027 305 5190

Thinking of building in 2022?

Start the design process with the Fowler Homes Taranaki team today. Give Jason or Tony a call on 0800 436 9537. Visit our website to view our Plans Range. www.fowlerhomes.co.nz

Stratford Knit and Sew

Quality winter stock now in store

Phone: 06 765 4181
202 Broadway, Stratford
www.stratfordknitandsew.com

POWERLINE FAULTS AND SERVICING

From a fuse or broken insulator replaced to a complete powerline rebuild
Call: TOP OF THE LINE ELECTRICITY SERVICES

Greg Lewis: 027 453 0326
Justin Robinson: 027 445 9162

Powerline Servicing Specialists
Free line inspections
Free advice | Free quotes

Wet weather strikes Taranaki

While a severe weather event pummelled the top of the South Island and Wellington last week, Taranaki did not escape unscathed. MetService issued a heavy rain warning for Taranaki and Waka Kotahi were advising drivers to take care on the roads and avoid unnecessary travel. More than a metre of rain on Mount Taranaki caused significant flows down all rivers resulting in several families voluntarily evacuating their homes.. On Friday flooding closed State Highway 45 between Manaia and Hawera at Inaha with southbound traffic diverted along the Inaha Road. At Okato, the full length of the Mangatete Road was closed with the risk of



Flooding closed State Highway45 at Inaha.

the Stony River bursting its banks. Other roads to be closed included Mangatoro Rd (Okau Rd to the end of road), Mohakatino Rd (SH3 to the end of road),Upland Rd (between SH3 and Upper Lepper Rd), Tarata Rd (From Otaraoa Rd to the district boundary) – past Oapui Rd, Makino Rd North (off Rerekino Rd – full length), Okau Rd, past Waitaanga Rd to Mt Damper, and Waitaanga Rd from Okau Rd to the end. Heavy rain resulted in a large number of potholes between New Plymouth and Eltham, and road users were asked to take care and follow temporary speed restrictions between Inglewood and Egmont Village on SH3 due to surface flooding. Inglewood had wastewater

overflows at the oxidation ponds into Kurapete Stream, Konini St into a tributary of the Waiongana River, and three service access holes (manholes) in the town. In Waitara, there were sewer overflows from the Outfall pump station to the sea and three service access holes (manholes) in the town. The New Plymouth District Councils provided temporary toilets in these towns and residents were asked to conserve water by avoiding using their washing machines for a few days and taking shorter showers. In South Taranaki, the stormy weather caused a wastewater overflow from the Eltham Wastewater Treatment pond to the Mangawhero Stream. Warning signs were put up and testing carried out..

Exercise could help you avoid Covid

Doing around 20 minutes of exercise each day has been linked to a lower risk of COVID-19 infection and less severe COVID-19 if you do get infected, according to an analysis of studies. A weekly tally of 150 minutes of moderate-intensity exercise - just over 20 minutes a day, or 75 minutes of vigorous-intensity exercise seems to afford the best protection. The analysis showed that, overall, those who included regular physical activity in their weekly routine had an 11% lower risk of COVID-19. They also had a 36% lower

risk of hospital admission, a 44% lower risk of severe COVID-19 illness, and a 43% lower risk of death from COVID-19 than physically people.

Climate Commission misses the dairy with ETS advice

: Greenpeace says that the Climate Change Commission’s advice to the Government on the Emissions Trading Scheme (ETS) misses the mark because it continues to exempt New Zealand’s biggest climate polluter - agriculture. Agriculture makes up half of New Zealand’s emissions, with intensive dairy the largest single emitter in the country - accounting for a quarter of all climate pollution. “While today’s proposals are silent on agricultural emissions, the Climate Change Commission notes the risks that not enough is being done to drive down emissions - threatening New Zealand’s comparative advantage and loading costs onto future generations. “Disastrous storms, floods and heatwaves this week show we don’t have a moment to lose in cutting emissions from intensive dairy, New Zealand’s biggest climate polluter,” says Greenpeace lead agriculture campaigner Christine Rose. “The Government must bring agriculture into the Emissions Trading Scheme and turn off the tap on the drivers of agricultural pollution - synthetic nitrogen fertiliser and too many cows.” Though there is ‘backstop’ legislation in place while the Government considers agri-industry self-regulation through ‘He Waka Eke Noa’,

according to Greenpeace Aotearoa it would take agriculture almost 100 years to be included at the same rate the public pays for emissions. The Climate Change Commission finds the ETS will have a disproportionate impact on lower income households and those least able to adjust, and that domestic distributional impacts and other equity considerations need to be managed. “To be an equitable and efficient system that addresses the climate crisis, the Emissions Trading Scheme must fully include industrial dairying now. While agriculture gets a free pass from the ETS, regular people across the country are having to pay the price and pick up the slack,” says Rose.

“The Government must address the causes of climate change, not just price them. That means phasing out synthetic nitrogen fertiliser and halving the dairy herd.” Synthetic nitrogen fertiliser produces twice the emissions of pre-Covid domestic aviation, and by enabling dairy intensification it’s responsible for producing

much more than that, including much of the most potent greenhouse gases, methane and nitrous oxide. “Now is the time to usher in the regenerative farming revolution, which works with nature - not against it. A better farming future is possible but the need for action is urgent.”



OPUNAKE & COASTAL NEWS
LIKE ONE OF OUR PHOTOS?
Did you know that photos that are published in our paper are available to purchase?
Call in and see us today.
Ph/Fax: 06 761 7016 - 23 Napier Street, Opunake
or e-mail us: ads@opunakecoastalnews.co.nz
Prices from:
Postcard size \$7 - Medium size \$10 - A4 size \$18



PowerWorx
Power Supply Rural & Residential
Design, upgrade and repair overhead and underground power supplies
• Powerco Approved
• Underbores - wires and pipes
• Powerline maintenance
• Fault repair
• Subdivision power installation
• Vegetation control around powerlines
• Network connections
• Transformer & line upgrades
• Specialists in rural power servicing and installation
0800 877 746
Taranaki Region
Contact Bruce Wilson Manager
58 Glover Road, Hawera Ph: 06 278 4514
Email: powerworx@obertech.co.nz



Equipment Hire
348 South Rd, Hawera
Ring the yard on 06 278 7974 during working hours or message us on facebook
Brayden Kidd is presenting our July basket winner, Egmont Refuse & Recycling Ltd (Raymond).

**Egmont Refuse & Recycling Ltd**
Give us a call - we'll talk rubbish



WALSH AGRIMEC TYRES & SERVICE
Phone 06 761 8999—027 256 8083
Opunake’s Biggest Range of Tyres

Come in and see us for a quote. We also stock a big range of batteries & automotive accessories.
38 Ihaia Road, Opunake
Email: accounts@agrimec.co.nz

Myth busting at the business end of water reform

Everywhere we turn in Aotearoa, there's an upsetting story about the quality of our three waters – drinking water, wastewater and stormwater. These are being caused by a combination of factors, including an ailing, deteriorating and over-burdened water infrastructure, population growth and regular extreme weather events, like last week's flooding that swamped Coastal Taranaki and our friends in Nelson. Water reforms will be welcomed in Ōpunake, where latest news reports say citizens have been living with unacceptable brown drinking water, which is so bad "the dogs won't even drink it". So, to protect our precious waters, change needs to happen, and it is. The legislation to set up



GLEN BENNETT
MP FOR NEW PLYMOUTH

Water Services Entities is progressing through the public submission stage. This past week I have been part of the cross-party group of MPs travelling the country hearing submissions on the bill. It will come back to Parliament with recommendations from the submission process. There's a risk some people may have made submissions on a bill that doesn't exist, because they were told,

wrongly, that iwi will own half the water entities, or impose royalties on water, or veto decisions, or that Central Government will take over the assets and debts. None of this is true. Ownership of water entities remains with councils. Local iwi will join council reps to appoint independent professionals – like engineers, planners, or accountants – to boards that oversee entities. The misinformation campaign in rural communities has been condemned by Local Government NZ. It is a shame that rhetoric from Destiny Church and the Taxpayers Union is blocking discussion of important public health improvements and economic benefits. Public health experts like Professors Michael Baker and Nick Wilson from the University of Otago

published research in July 2022 showing more than 34,000 people get sick from drinking water each year. In 2016, four people died and more than 8,000 got sick in Havelock North when drinking water was contaminated. The National Party quite rightly set up an inquiry which led to the Three Waters proposals. Taranaki beaches have also been affected by unacceptably high levels of E coli and enterococci bacteria. In March 2019, the New Zealand Secondary Schools Triathlon was cancelled after high levels were found at Ngāmotu Beach. A subsequent Taranaki Regional Council report said stormwater controls at Port Taranaki had not kept pace with its expansion to accommodate logs. In March 2021, Back Beach also recorded unacceptably

high bacteria levels and surfers and swimmers were warned to stay out of the water.

A news report in May this year outlined "a \$31 million solution to the long-running issue of raw sewage leaking into rivers at two of Taranaki's top holiday spots" – Onaero and Urenui. Close by, at Waitara, there was a call for urgent action by the New Plymouth District Council to fix ongoing flooding issues affecting some residents for decades. The new water entities will have much stronger balance sheets to borrow at lower interest rates, so councils won't have new debt burdens. Without reform, households face costs of up to \$9,000 per year, or services that keep failing. Local voice will always be crucial. Sub-regional

advisory panels and consumer forums are a new feature of the bill. This means that councils in Taranaki have a way to be heard in a particular geographic area. New Plymouth District Mayor Neil Holdom is on the working group to ensure local voice in the Three Waters reform.

There is one final misunderstanding to be cleared up. The reforms are for Council water services only, which cover 81% of the population. They do not affect households who collect water off their roof, or rely on septic tanks to handle wastewater. As many as 75,000 small privately owned water networks like this are unaffected.

Ngā mihi,

Glen Bennett
MP New Plymouth

Welfare thats works warranted



BARBARA KURIGER MP
TARANAKI-KING COUNTRY

For practical people like me, numbers are comforting. They can confirm either a problem, or a solution, depending on the context being applied. So what does it tell you when there are 50,000+ more people on a Jobseeker benefit than there were when National left office five years ago? Moreover, 34,000 of those are under the age of 25 – an increase of 49% since 2017. At a time when employers are crying out for workers, it tells me very clearly that we

have a huge problem. It also makes it plainly obvious that Labour's approach to getting young people off welfare and into work is failing miserably, despite there being 2300 more staff at the Ministry of Social Development (MSD) since 2017. To clarify, Jobseeker benefits were set up to provide short term support for people deemed fit and able to work. So the figures are even worse when more than 13,000 of these under 25-year-olds, have been stuck on benefit for 12 months or more. That's almost twice as many as when Labour took office. Statistics also show that if someone under the age of 20 goes onto a benefit they will spend an average of 12 years on welfare. Whichever way you look at it, the numbers do not lie. We have a huge waste of young potential going begging and yet another government department


failing to deliver. National's new Welfare that Works policy focusses on these young Jobseekers. Launched at our recent annual conference, Employment spokesperson Louise Upston said: "Right across the public service, we are seeing Labour spending more money on bigger bureaucracies that produce worst results. Given MSD's failure to bring Jobseeker numbers down, despite an extremely tight labour market, it's clear we need a new approach." Our new approach will contract existing services to provide these Jobseekers with a dedicated Job Coach using funding redirected from MSD. These coaches will assess any barriers they are facing e.g. literacy, learning disabilities, lack of a driver's licence, key work skills gaps, addiction issues and develop an individual plan to address them.

There will be obligations Jobseekers will have to meet, and sanctions for those failing to follow their plan, but there's also a \$1000 bonus for those who remain in work for at least 12 months or more. In my electorate travels recently, I've had the opportunity to talk to community training and employment service providers. During those talks I have discovered they are delivering upskilling and employment options with many young people, not on Jobseeker benefits, and therefore not included in official MSD statistics. So despite the huge numbers already mentioned in this column, just how deep does the iceberg go? Moreover, if it wasn't for these local providers, how would these people be helped? National understands people need support when they face hard times and taxpayers are happy to support them. But there's an onus on those that are able, to help themselves. Studies show us that being welfare dependent can lead to a life of isolation, so we want to make sure young people have every opportunity to lead fulfilling lives through work. And we believe the best people who are able to help them do that are organisations at a community level. Reversing the numbers under Labour's watch might take some time, but we're definitely up for the job.

Barbara Kuriger
MP for Taranaki-King Country

PADDY BOLGER
Paddy with 45 years experience listing and selling farms, lifestyle properties & houses is still working, with over 2000 sales under his belt.

EXPERIENCE DOES COUNT!
Contact Paddy for free appraisal
Remember, Paddy's commission is always negotiable, so don't list with anyone else until you have talked to him. It won't cost a cent!

FOR THE RIGHT ATTITUDE, ATTENTION & ACTION
**Contact Paddy on 027 434 446**
ah: 06 757 2018
paddybolger@townandcountryrealty.co.nz
REEA 2008

Town&Country

DOES YOUR TEDDER NEED AN UPGRADE?...
WE CAN HELP YOU

ENQUIRE TODAY

TransAgCentre Ltd
...and proud of it

New Plymouth
65 Katere road 06 758 2274
Paul: 027 498 7277


Hawera
16 Glover Road 06 278 5119
Raymond: 027 444 8861

Steph Lewis
MP for Whanganui

Keep in touch:
steph.lewismp@parliament.govt.nz
labour.org.nz/stephlewis
Whanganui office: 06 348 1010
Hāwera office: 06 278 2180
f /stephlewishanganui
m /stephlewislaborwhanganui


Authorised by Steph Lewis MP,
Parliament Buildings, Wellington



Building a secure future for New Zealand

We're focused on supporting people here in Taranaki through the challenges of today, while also preparing to seize the opportunities of tomorrow, as part of our plan to build a secure future for New Zealand.

Right now, inflation is pushing up prices around the world. While New Zealand can't control the forces behind this, we can take action to ease cost of living pressures on Taranaki families, and we are.



STEPH LEWIS
MP FOR WHANGANUI

We've introduced a new cost of living package, extended our fuel tax cut and half

price public transport, and we're working to make sure Kiwis pay a fair price at the supermarket, among other measures.

As we support Kiwis through this tough period right now, we're also looking to the opportunities of the future – and we're well underway with our plan to make the most of them.

To build a high wage, low emissions economy that provides economic security in good times and bad, we

need to a skilled workforce for the jobs of tomorrow. We've supported more than 200,000 Kiwis through apprenticeships and trades training, and we're seeing more people move into jobs through successful initiatives like Mana in Mahi. Recent figures also show that unemployment remains at a near record low, and wages are up.

On top of this, we've rebalanced our immigration settings to ensure we have the skills we need to build

back better and meet the long-term challenges facing New Zealand.

We will continue working hard to buffer New Zealanders from the challenges of today, as well as the challenges of tomorrow.

I would love to hear how our support measures have helped you and your family during these difficult times. I have launched a community survey to find out what you love about living in Taranaki

and what you would like to see in the future. It's time to have your say! Get in touch with my offices, or take my survey online at labour.org.nz/stephlewislewis. The survey will be sent to mailboxes throughout our electorate soon and hard copies will be available to pick up from my office in Hāwera. I look forward to reading your responses.

Steph Lewis
MP Whanganui

Dr Sharma expelled from the Labour Party caucus

Prime Minister Jacinda Adern has announced the expulsion of Dr Gaurav Sharma from the Labour Party caucus, effective immediately. This means he will be an independent Member of Parliament until the next General Election, which is scheduled for 2023. Dr Sharma is the MP for Hamilton West. The expulsion was the result of a caucus meeting on Tuesday August 23.



Dr Gaurav Sharma MP.

Furthermore, the matter has been referred to the New Zealand Council of the Labour Party for them to consider any further disciplinary action against Dr Sharma.

A decision to initially suspend the parliamentarian was the result of a special caucus meeting on Tuesday August 16. Dr Sharma was asked to attend but didn't turn up, commenting that the special caucus meeting was a "Kangaroo Court."

At the Tuesday August 23

meeting, Dr Sharma was allowed to speak (before the vote) and probably requested an independent inquiry into his concerns, which included allegations of bullying and other allegations including Labour's hierarchy advising ways for MPs to circumvent the Official Information Act (OIA). This request was declined.

The vote to expulse Dr Sharma was almost unanimous, with one Labour parliamentarian voting no and another abstaining

on the motion to expel Dr Sharma.

The Prime Minister Jacinda Adern commented, "It is worth remembering the root cause of this fallout was multiple members of Gaurav's staff raising issues with his management." She added, "For over a year Labour Whips and the Parliamentary Service have sought to resolve these issues with Gaurav."

See the Editorial on page 2.

High Court sends the question of rodeos back to NAWAC

In a High Court decision Justice Churchman found errors and procedural defects in the Government's process when reissuing the rodeo code of welfare in 2018.

While the Court declined to make a ruling on the legality of rodeo, the Court has dismissed the judicial review sought by the New Zealand Animal Law Association (NZALA) and SAFE.

The Court said the proper place to challenge the legality of rodeo would be during a consultation process run by the National Animal Welfare Advisory Committee (NAWAC).

NZALA and SAFE say they

will bring the same concerns they have with rodeo to the NAWAC consultation process.

NZALA President Saar Cohen says "The Court has passed the ball to NAWAC, and made no decision on the lawfulness of rodeo, which we still maintain violates the Animal Welfare Act 1999." SAFE CEO Debra Ashton says "We will not give up and we will continue to seek justice for the thousands of animals abused in rodeo each year."

After NZALA and SAFE filed court proceedings, NAWAC asked the Court to pause the proceedings and let NAWAC run its consultation process. The

Court declined.

"We expect NAWAC will proceed with their review of the code, which has been on the back burner for far too long," added Ashton.

"It shouldn't take legal action from charities to prompt NAWAC into action. We would urge them to not delay this review any further."

The next issue of the Opunake & Coastal News is on Sept 8



Woodward's FIREWOOD

Animal Bedding For
Stand Off Pads
Calf and Goat Sheds
Wintering Barns

- Untreated ground up waste wood —
- Raw material stockpiled then ground to order —
- Pick up or delivered to your farm —
- 9m³ truck loads —
- 65m³ truck loads —

06 755 2047

124 De Havilland Drive, Bell Block • office@woodwardsfirewood.co.nz
www.woodwardsfirewood.co.nz

Furniture Zone

make your house a home



BEDROOM DINING LOUNGE HOMEWARE

BED RUMOURS

Crown Plaza FZ11 Queen Mattress

- * 5-Year Warranty
- * Available in Q, K & SK
- * Breathable, natural latex allows for airflow and a dryer sleep surface

Only **\$1999**
Save \$1070





20% off all Coronet Timber Range

CORONET

5PCE Dining Set

(includes 4 chairs + 1000x800 table)

- * Made from solid Pine

Only **\$999**
Save \$256

Sale ends 31 August 2022.
Terms, conditions and exclusions apply.
Stock may vary in store. See instore for details.

INTEREST FREE FINANCE OPTIONS AVAILABLE

298 DEVON STREET EAST | PH 06-215-3020
OPEN TUE-FRI 9:30AM-5PM & SAT-SUN 10AM-5PM
furniturezone.co.nz

Flaming Good concert and fundraiser for Okato Fire Brigade

About 60 people were treated to a diversely enjoyable concert in Okato's Hempton Hall on Saturday August 13. The event made over \$800 (including \$200 from the Okato Lions Club) for the Okato Fire Brigade, whose members are most supportive of the Okato Food Bank when they have their appeal for donated groceries.

Organiser Lesley Dowding, in her introduction, said, "It is really exciting to bring some live music to Okato." In reference to the Okato Fire Brigade she added, "They are all volunteers and we'll never know when we'll need them."

The event got underway with a very good all male

group, called Tone Rangers, with Jeremy Wheeler (guitar), Gary Semenoff (guitar), Noel Gillie (vocalist) and Wayne Morris (percussion) keeping us well entertained.

An all-woman group called the Shanty Sheilas entertained us with unaccompanied songs reminiscent of pirates singing sea shanties. The talented group included Cynthia Ward, Raewyn Wright, Bev Tatum, Gail Church, Sandy Weir and Deb Harding. "Being a pirate is all fun and games until someone loses a leg or an eye," commented one pirate. The pirate costumes were captivatingly gaudy and colourful.

The one solo act was Mike Harding who accompanied his engaging singing with guitar, his folksy music including such numbers as Imagine the Panic the Day the Pub Burned Down. He is a major collector of NZ folk



Aaron Bösch and Bernie Schmid.

music and is often heard on RNZ.

Aaron Bösch (accordion) and Bernie Schmid (guitar) took us to the interval with their great toe-tapping music. Whenever music is playing in Okato it is always a welcome sight to see this duo perform to a professional standard.

Another great band, Ok Boomers, performed, which featured Peter Hickey (saxophone), Raewyn Wright (vocalist, ukelele), Andy Bassett (vocalist, guitar) and Wayne Morris (percussion). Their soulful It's All Too Beautiful was a highlight of the event.

A definite highlight was Dominique Blati, lead singer of La Mer Singers who sang all songs in French, such as



Dominique Blati.

Dark Eyes and The More I Kiss You – beautifully. Her animated actions added positively to each song and she also explained the interesting background of each song.

The event concluded with Mike Gordon singing a selection of standards such as Night and Day, Georgia, Sunny, Tea for Two and

Summertime. Dave Lilley accompanied Mike on piano with definite finesse. Mike was in fine voice and it was an enjoyable ending to a successful musical event and great cause.

Well done Lesley for organising this unique event and to all the performers who participated free of charge.



Mike Gordon and Dave Lilley.



SCHURR IRELAND

CHARTERED ACCOUNTANTS

NEW PLYMOUTH

ELTHAM

p. 06 759 0105

p. 06 764 8305

www.schurrireland.co.nz



Cabinet Making, Glass Supplies & Custom Joinery Solutions

Donald & Ian Murray

06 764 8616

027 242 8379

027 348 9445

136 High Street, Eltham

eltham.bs@gmail.com

www.elthambuildingsupplies.co.nz

Sinclair Electrical

are your heat pump specialists

Call today for exceptional service and a warmer home this winter!











SINCLAIR ELECTRICAL & REFRIGERATION

31 Tasman Street, Opunake

Phone: 06 761 8084



ASBESTOS REMOVAL

Providing Safe, Certified and Professional Asbestos Removal for both Residential and Commercial buildings



021 194 3201

www.pepperconstruction.co.nz

06 753 6159 | 027 408 4493



SHEDS & GARAGES

Custom designed commercial & residential sheds constructed & delivered to the highest industry standards, backed by our Professional Guarantee



027 555 0591

Arts Council position for Manaia artist

Manaia artist Bonita Bigham has been appointed to a three year term on the Arts Council of New Zealand Toi Aotearoa (Creative New Zealand’s governing body) by Minister for Arts, Culture and Heritage Hon Carmel Sepuloni. She takes over from outgoing member Dean Whiting.

Bonita (Ngaruahine, Te Atiawa) has been an elected member of the Taranaki Coastal Community Board for the last three years and was a South Taranaki District councillor for six years before that.

From October she will take her seat at the Taranaki Regional Council, having been elected unopposed as the only candidate for the Maori constituency. Bonita is a founding member of Toi o Taranaki Ki Te Tonga, a Māori artists’ collective in Taranaki, and a Presiding Member for Oranga Marae (formerly Marae Lotteries Heritage Committee). She holds Masters degrees in both Fine arts and Maori Visual Arts.

“Bonita is a passionate



Bonita Bigham.

arts advocate and scholar who centres her research and output on cultural themes and practices, including raranga, tāniko, and kowhaiwhai,” a press release from the Ministry of Culture and Heritage announcing the appointment reads. .

Bonita said she had been

approached a year ago and asked if she would be interested in putting her hand up for the Arts Council.

“It’s been on the cards for a while and it’s been a pretty rigorous process,” says Bonita. This had included submitting a CV and attending an interview

in Wellington.

She also attended a meeting of the Arts Council before her appointment. A few months ago she was appointed to the Art’s Council’s Komiti Māori (Māori advisory committee) which she co-chairs with fellow Ngāruahine member Kura Moeahu.

She is looking forward to her new role.

“I’d like to be able to do my best to elevate Maori art forms and Maori arts practitioners,” says Bonita. “My experience has shown me that there is more appetite for Maori art forms in our society. I want to help where I can to get more robust decisions for the arts.

“It’s about trying to elevate the status of the arts in our communities and society within Aotearoa, and help to be a voice for arts practitioners with Creative New Zealand which is the major funding organisation within the arts and to help the council with a Te Ao Maori perspective in their discussions and decision making.”

Bonita is one of two new appointments to the Arts Council. The other is Whanganui-based Whetu Fala (Ngā Rauru, Ngāti Maniapoto, Ngāti Maru ki Taranaki, Sāmoa, Rotuma).

Pou Mataaho o Te Aka, Deputy Chief Executive Policy and Sector Performance at Manatū Taonga Ministry for Culture and Heritage, Emily Fabling welcomes the two appointments..

“Both Bonita and

Whetu hold considerable knowledge of te ao Māori and deep understandings of our sectors, which they will bring to their Council positions,” she says. “It’s also wonderful to see both women representing their respective regions of Manaia and Whanganui and bringing rich insights from these areas to the Board. I look forward to seeing their great contributions to both Creative New Zealand and the wider sector.”



Gardening with Palmers Gardening Centre



How to espalier fruit trees



Espalier trees are often grown against a wall...

The art of espalier is becoming increasingly popular, especially for smaller gardens.

Espalier is a decorative style of fruit tree training. Espalier trees are often grown against a wall or fence, but wires between posts can also be used to support and train the tree. By doing so, the tree creates the perfect divider for different areas of your garden, while still retaining sunlight and visibility.

1. First, it’s important to plan your pattern and the type of fruit tree that might work. Consideration should be given here to the age of wood the fruit is borne on.

2. Choose a location – preferably somewhere north-facing that gets a minimum of six hours of direct sunlight.

3. Prepare the support, fixing horizontal wires to a structure that will support

your espalier and train the branches at desired angles. Wires should be spaced 30 – 60cm apart, with eyebolts used on fences and walls to keep the tree away from the structure.

4. Plant your tree, setting it in the ground about 30cm from the wall, fence or post structure.



...or a fence.

5. Your tree is ready to begin its training. For the first couple of years, while your fruit trees are getting established, remove some of the fruit before it gets much bigger than pea-sized which will help promote a higher quality for the remaining fruit.

For more information and

expert advice, come in and talk to one of our friendly staff at Palmers.

Palmers knows plants

At Palmers, you’ll find a Garden Centre full of passionate gardeners who are ready to share the joy of good living with you. We are all about creating beautiful spaces, at our place and at yours. We’re locally owned and operated, packed with quality products and expert advice for your home and garden.

CAFÉ BOTANNIX

The ideal setting to stop in for a delicious meal, made in-house with seasonal garden produce. Our tranquil garden setting and covered outdoor courtyard is the perfect place to relax after meandering through the garden centre.

Cnr Katere and Devon Rd, Fitzroy, New Plymouth.
Ph: 06 758 7455. Open 7 days from 8.30am.

Palmers

GET READY FOR THE SEASON AHEAD WITH A QUALITY MOWER

NEW PLYMOUTH **HAWERA**

65 KATERE ROAD **16 GLOVER ROAD**

South Taranaki:
Raymond - 027 444 8861

North Taranaki:
Paul - 027 498 7277

TransAgCentre (2014) Ltd. AGRICULTURE

... and proud of it

A Towering Talent -



Nigel Ogle, owner of Tawhiti Museum, speaks at the book launch. Standing, from left, are Vanessa Smith, Rolland and Stephanie McKellar.

“The biggest act of cultural vandalism in the history of the district,” commented former mayor of South Taranaki Mary Bourke in reference to the destruction of Ronald Hugh Morrieson’s Hawera homestead to be replaced by a KFC restaurant.

On Sunday August 14 Rolland McKellar launched his biography on writer Ronald Hugh Morrieson at the Tawhiti Museum alongside the room where Hawera’s most famous son did all his writing, the attic

wanted to “correct some incorrect things” which had been implied about the author and hoped his book would “promote a renaissance of Ron’s memory and superb writing.” South Taranaki mayor

Another speaker Gordon ‘Mac’ Sole, an old friend of Ronald Hugh Morrieson in the 1960s, had a great fund of anecdotes about the colourful author who he described as a “hard case.”

He raised many laughs as he fondly related some of their escapades.

He recalled on one occasion they’d been down at Opunake Beach and visited the Club Hotel. Ron said, “Let’s have a bit of fun,” and when they entered the pub announced loudly “When I drink, everyone drinks.” After the entire clientele at the pub assumed they were being shouted a drink on the house, which they all enjoyed, Ron then announced loudly “When I pay everyone pays.” The proprietor, a Mr Burt, was not amused. The couple were thereafter banned from the pub. Yet ironically, it was Mr Burt’s son Mark who set up Morrieson’s Café Bar in honour of Ron about thirty years later.

Mac said that though Ron was sometimes accused of being a womaniser, Mac, ever the loyal friend, would retort to the accuser, “Look in the mirror.”

Mac reflected that he had “very happy memories” of Ron.

“We became very, very close friends,” he said with feeling.

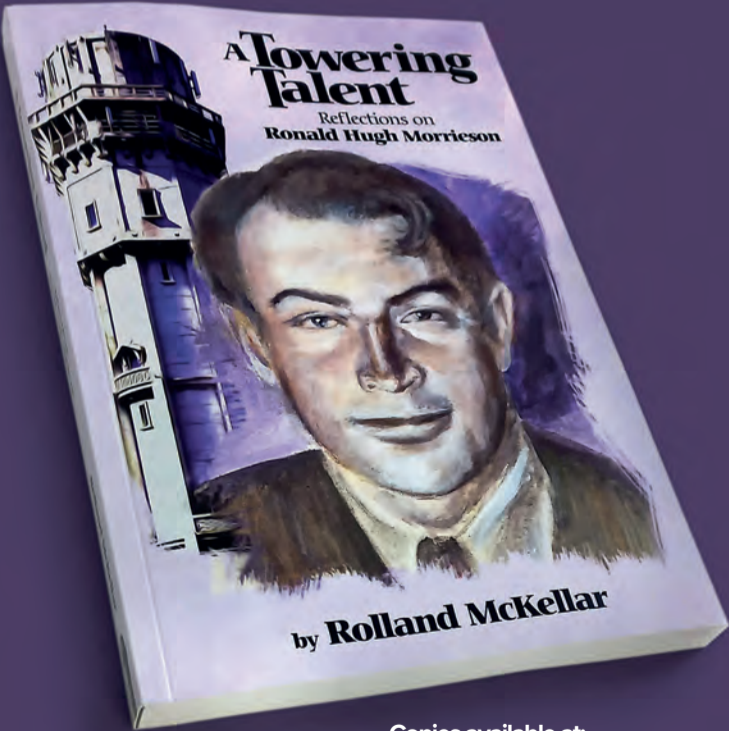
Also among the speakers was Nigel Ogle from the Tawhiti Museum who hosted the book launch and Robert Surgenor, who, when they were demolishing Ronald Morrieson’s house which stood at the corner of South Road and Regent Street, Hawera, had the foresight to move the attic to his property where it lay for 19 years, also spoke.

Former South Taranaki District mayor Mary Bourke described the demolition of the Ronald Hugh Morrieson’s house as “The biggest act of cultural vandalism in the history of the district.” She added that Rolland had been “very courageous” in writing the book, an entire chapter of which had been devoted to the attempts to stop its demolition.

Mary Bourke was mayor of the South Taranaki District when the house was demolished in 1992 and said that at the time the vote among the councillors was that a Kentucky Fried Chicken outlet – built on the site of the original homestead would provide some employment in the late 1990s. She professed to be “very sad” about it and indeed clearly still had regrets.

Continued on next page

Boldly Celebrating the CENTENARY of Ronald Hugh Morrieson



A Towering Talent
Reflections on
Ronald Hugh Morrieson
by Rolland McKellar

Copies available at:
Pastimes, 87 Tasman St, Opunake
Govett Brewster, 42 Queen St, NP
Poppies, 7 King St, NP
Bookstop Gallery, 21 Brougham St, NP
Tawhiti Museum, 401 Ohangai Rd, Hawera
Paper Plus, 162 High St, Hawera
Paper Plus, 243 Broadway, Stratford
Inglewood Book Centre, 31 Rata St, Inglewood

CONTACT: rtdmckellar@xtra.co.nz



Kaumatua Gordon ‘Mac’ Sole, a close friend of Ron, who gave a moving speech punctuated by amusing anecdotes.

bedroom which has been preserved as an exhibit at the museum. It is called the Ronald Hugh Morrieson Memorial Room.

Rolland’s book entitled “A Towering Talent” which he has written over some considerable time, includes a history of the family and also recollections of the author by people who knew him. He had interviewed 40 people, some of whom are sadly no longer with us, he said at the launch.

“I wanted to preserve the memories people (who knew him) had of the author,” Rolland said adding he also

Phil Nixon, who spoke at the launch, commended Rolland for his biography of the author born a few months after his own mother and of whom he had heard so many stories. He said he had “put South Taranaki on the map.”

The mayor added that as well as being a great writer “he was a great musician.”

He continued: “The book launch is another of those good things happening in the community.” The mayor also had some nice comments about the Opunake & Coastal News. “It is absolutely a fantastic community newspaper.”

Reflections on Ronald Hugh Morrieson



From left, Debbie Feather (relative of Ron Morrieson), Robert Surgenor (rescued Ron’s attic), Mary Bourke (Former Mayor who fought to save Ron’s homestead), Clive Cullen (Scarecrow Committee, dedicated to saving Ron’s homestead) and Denise Sallaway (learned music from Ron). Debbie is the daughter of Colleen Notman (nee Johnson), one of Ron’s first cousins.

Continued from previous page

Nigel Ogle (a Scarecrow Committee member) also recalled the valiant efforts to preserve the house and paid tribute to the late Tim Chadwick – later killed in a car accident – who he

said “fought harder than anyone else in the Scarecrow Committee.” Tim’s mother Pamela was also at the book launch. Jenny Bennett, former Head of English at Opunake High School who spoke of what has become a

lasting legacy of the author - the Lysaght-Watt Ronald Hugh Morrieson Literary Awards, now in its 32nd year, said Hawera Library Plus had done “a great job of publicising the Ronald Hugh Morrieson Awards which gets better every year.”



Front, from left: Standing outside the former attic of Ron Morrieson’s homestead (now the Ronald Hugh Morrieson Memorial Room) are former mayor Mary Bourke, Mayor Phil Nixon, Rolland McKellar and Tawhiti Museum owner Nigel Ogle.

SANDFORDS
RURAL CARRIERS

For competitive pricing on all your rural cartage requirements - Give us a call today!

Taranaki wide

Phone 0800 707 404

TRC candidates revealed for 2022 local body elections

Twenty-four candidates have put their names in the hat to be a Taranaki Regional Council elected member. Nominations closed for the 2022 local elections on Friday 12 August. The provisional list includes 11 candidates standing in the New Plymouth Constituency, three in North Taranaki, five in South Taranaki, four in Stratford and one candidate in the Taranaki Māori Constituency.

There are seven more candidates who have come forward to make their mark on our region than in the 2019 elections.

Chief Executive Steve Ruru said it was pleasing to see a rise in the number of candidates when many councils had struggled to get enough people to put up their hands.

“We’re delighted to have seen an increase in the number of candidates who have stepped up and taken a stand for what they believe in. It’s better for local democracy if voters have a wide range of candidates to choose from.

“I’d encourage voters to get to know their candidates so they can make an informed decision when they vote from 16 September. And of course please vote in the elections. Your say will have a direct affect on the big decisions



Taranaki Regional Council Building Stratford.

made by your Council so it’s vital you take part.”

Voting packs will be delivered from Friday, 16 September and voting closes at noon on Saturday, 8 October.

Provisional list of candidates:

New Plymouth (5 positions): Tom Cloke, Lyall James Field, Susan Hughes, Allen Juffermans, Rusty Kane, David Lloyd Lean, Charlotte Littlewood, Darrel Nicholas, Elvisa Van Der Leden, Chris

Wilkes, Craig Williamson.

North Taranaki (2 positions): Tama Blackburn, Mike Davey, Donald Hugh McIntyre.

South Taranaki (2 positions): Deborah Clough, Donna Cram, Alan Murray, Urs Signer, Neil William Walker

Stratford (1 position): Mary Bourke, Alan Jamieson, Matthew McDonald, Andrew Wood.

Taranaki Maori (1 position): Bonita Bigham.

Race on for New Plymouth District Council

The names are in, and the race is on for the people vying e to represent the residents of New Plymouth District for the next three years.

“As expected, we had a flurry of nominations on the last day but it’s really pleasing to see we have people standing for all positions. says NPDC Marketing Communications and Design Lead, Ben Kohlis

“There are a lot of big calls the council will need to make in the next three years and beyond and it’s important residents have their say on who governs our district and vote.”

In the Kōhanga Moa ward (Inglewood and surrounding area) current Councillor Marie Pearce was the only candidate and has been elected unopposed. Also elected unopposed are the four candidates for four positions on the Clifton Community Board..

The positions voters will need to make a choice on are: New Plymouth District Mayor, six councillors in Kaitake/Ngāmotu ward (for voters in on the role in New Plymouth city to Ōkato), one councillor in North Ward (Waitara up to Waitomo District Council border), one councillor in the Te Purutanga Mauri Pūmanawa (Māori ward), five district wide councillors. (These councillors would represent the whole district), and four positions on each of the Inglewood, Kaitake Waitara and Puketapu-Bell Block community boards.

Seventy seven nominations have been received for the 2022 election. Four are running for both mayor and a councillor role. There were 58 candidates standing in 2019, when there was a 45.3% voter turnout.

Voting documents will be delivered from September 16-21. Voting closes at 12 noon on October 8 .

Candidates. Mayor(1). Sam Bennett, Murray Chong, Shaun Clare, Peter Hardgrave, Neil Holdom, Greg MacKay, Muzz McDowell, Dinnie Moeahu.

Councillor at Large(5). Rod Ardern, Sam Bennett, Max Brough,Jenna Brown, Shaun Clare, Amanda Clinton-Gohdes, Harry Duynhoven, Dayna Jury, Joanne Kuvarji, Greg MacKay, Jonathan Marshall, Caro McKee, Dinnie Moeahu, Murray Seamark, Hepa Te Moana, Dan Thurston Crow, Udo Vink, Tane Webster, Tayla Willets.

Kaitake-Ngamotu General Ward (6). Chris Avery, Gordon Brown, David Bublitz, Anneka Joyce Carlson, Graham Chard, Murray Chong, Bali Haque, Kevyn Harris, Monica Hylton, Dave Kurth, Chris Lee, Craig Nielsen, Michael O’Sullivan, David Ross Payne, Ivan Pihama, Sewak Singh, Bryan Vickery.

Te Parutanga Mauri Maori Ward(1). Maia Hoengarangi Bailey, Te Waka McLeod.

Kohanga Moa General Ward(1). Marie Pearce. Elected unopposed.

North General Ward(1). Tony Gavin Bedford, Bill Simpson.

Clifton Community Board(4). Waitaoro Alexandra Batley, Neville Hagenson, Tyla Nickson, Murray Seamark (elected unopposed).

Inglewood Community Board (4). Jono Burrows, Christine Fabish, Nathan Ferry, Rex Healy, Nick Jones, Sarah Lucas.

Kaitake Community Board(4). Graham Chard, Teresa Goodin, Renee Hohaia, Elayne Kessler, Dave Kurth, Paul Lobb.

Puketapu-Bell Block Community Board(4). Michel Baker, Grant Knuckey, Sewak Singh, Adrian Edward Sole, Tane Webster.

Waitara Community Board(4). Kura Denness, Trevor Dodunski, Dayna Jury, Jonathan Marshall, Pairo McLeod, Jane Parker-Bishop, Joe Rauner.

NEIL WALKER

RUN WITH WALKER

FOR TARANAKI REGIONAL COUNCIL

Approved by Neil Walker
357 High Street, Hawera 4610

Candidates take a stand for 2022 Local Body Elections

At the close of nominations (Friday 12 August) all South Taranaki wards had candidates standing in this year's local body elections says South Taranaki Electoral Officer Becky Wolland.

All up, 43 candidates are standing for 30 district council and community board positions. There are two candidates standing for the mayoralty. Current Mayor, Phil Nixon, who is seeking re-election for a second term and new candidate, Walter Smith.

There are also four candidates standing for the two vacancies in the recently established Māori Wards. South Taranaki District Council chief executive Waid Crockett congratulates all candidates for putting their names forward. "Our democratic system relies on people being prepared to step up and be counted, so I'd like to thank all those who have put themselves forward for their community," says Mr Crockett. "Now that the nomination process has closed, where elections are to be held it's important that people actually vote," says Crockett.



Opunake Beach, Town and Lake.

Local Government plays such an important part of people's daily lives. From the water we drink, to the roads we travel on, the facilities we enjoy, to the waste we dispose and recycle. With around \$1 billion in assets and an annual operating budget of \$74 million it's important that voters have their say on the people managing our resources and making the big decision about the future of our district," he says. Voting in this year's local

body election is by post, with voting documents being delivered to enrolled voters from 16 September. Voting closes at 12 noon on 8 October. Candidates for Mayor: Phil Nixon, Walter Charles Smith. Council: Eltham-Kaponga Ward (2 required): Mark Bellringer, Steffy MacKay. Patea Ward (2 required): Robert Northcott, Brian Rook. Taranaki Coastal Ward (2 required): Aaron



Hawera Water Tower.

Langton, Bryan Roach. Hawera Ward (5 required): Andy Beccard, Celine Filbee, Te Aroha Hohaia, Diana Reid. Te Kurae Maori Ward (1 required): Leanne Horo, Caroline Waiwiri. Te Tai Tonga Maori Ward (1 required): Glenn Katu, Tuteri Rangihaeata (Te Pati Maori). Community boards: Eltham-Kaponga (4 required): Karen Cave, Sonya Douds, Hemi Haddon, Alan Hawkes, Lindsay Maindonald, Carl Van Kerkhoff. Patea (4 required): Jacq Dwyer, Michael Kanara, Ngapara Nui (Ngati Ruanui), Joanne Peacock, Cheryl Rook, Owen Savage, Bronwyn Watrus. Te Hawera (4 required): Glenn Anderson, Andrew Blanche, Desiree Bond, Heather Brokenshire, Raymond Buckland, Celine Filbee, Russell Hockley (Ngati Ruanui Iwi and Te Korowai o Ngaruahine), Ricardo Pintor, Nikki Watson. Taranaki Coastal (4 required). Tazmyn Katene Ashford, Sharlee Mariekura, Elizabeth Sinclair, Andrew Whitehead, Monica Willson.

THANK YOU SO MUCH FOR YOUR CONTINUED SUPPORT
AND LOVE OVER THE LAST TEN YEARS.
IT HAS BEEN GREATLY APPRECIATED.

Opunake Coastal Pharmacy will be sold and merged to
Opunake Pharmacy.

Tae Wan will be working at Opunake Pharmacy after a short break so
he will still look after his regular clients and will see you then.



Repeat prescriptions and new prescriptions on hold
can be collected from Opunake Pharmacy from the
1st of September

All retail products
20% - 50% off
Until August 31 or until stocks last



OPUNAKE COASTAL PHARMACY

Your coastal community pharmacy

55 TASMAN STREET, OPUNAKE - PHONE: 06 761 8599
(NEXT TO THE FOUR SQUARE)

John's thorough investigation paid off

Although he's surrounded by sheep farms, John Oliver is no sheep. When it comes to his dairy farm in Central Taranaki he does some thorough investigating before investing in equipment and infrastructure that will do the farm justice.

Stepping onto John's farm you must be impressed with the massive barn with composting floor he recently invested in. This is bound to keep the cows happy, and John's proud of his investment.

What he was less pleased with was his effluent situation.

His floating stirrer was no longer getting the job done, the pond was crusting over,



Left: At home on the farm. Central Taranaki farmer John Oliver is more than pleased with his new Nevada electric pond stirrer.

the pump was blocking, and with inconsistent pumping, the irrigators couldn't run consistently. Something had to be done.

John thoroughly investigated his options for a new pond stirrer. He liked the features of Nevada's electric stirrers and spoke to a few farmers who had them before contacting Nevada.

Mike went out to visit the farm and arranged for John to visit another local farmer

who had a Nevada stirrer so he could see it in action. Along with an electric stirrer, Mike also recommended a PC pump. The old pump was at the end of its life, and the new PC pumps provide the consistent flow needed to keep the irrigators working consistently.

Mike's advice aligned with John's research, and he was happy to proceed.

'The stirrer is certainly effective. Everything is swirling within a few of minutes. And with the new pump everything's flowing nicely, and the irrigators are back to normal.'

Nevada.

NZ FARMERS LIVESTOCK

For all your Service
Bull requirements,
Bull Sales &
Paddock Sales.
Now buying
in milk cows.

FOR MORE DETAILS contact your local NZFLL agent

Sheldon Keech - 0272227920
Bryan Goodin - 027 531 8511

Alligator Weed confirmed in Taranaki

Alligator weed has been discovered in Taranaki, with work under way to establish how far the invasive pest plant has spread.

Taranaki Regional Council Environment Services Manager Steve Ellis says the identification of the aquatic weed in a lagoon near Waitara is disappointing but was perhaps inevitable, given it is widespread in neighbouring regions.

"Obviously we didn't want it in Taranaki, but the fact it's been found is good news. We are hopeful we have identified it relatively early, allowing us a window of opportunity in which to contain its spread.



Alligator Weed found near Waitara.

"Alligator weed is notoriously difficult and costly to control once it becomes widely established so we're doing everything we can to prevent that happening."

The identification comes after the Council and the Ministry for Primary Industries launched a joint project focusing on pest pathways into the region and the identification of potential new pest species.

A local person had reported a possible sighting in the coastal lagoon. The Council took a sample and Manaaki

Whenua – Landcare Research confirmed it was alligator weed.

The Council is now working with experts to determine the extent of the infestation before making a plan for its control.

Mr Ellis thanked everyone who has reported suspicious weeds and urges the public to remain vigilant.

"This example shows just how important community support is for biosecurity. The more eyes we have out and about, the less chance of new weeds being allowed to thrive."

Alligator weed (*Alternanthera philoxeroides*) is a low-growing non-woody perennial plant that can grow in both sea and fresh water, where it forms floating mats. It can block waterways, aggravating flooding and impeding access. In pasture, it can out compete more favourable plants and be harmful to animals. It establishes and spreads aggressively from even the smallest stem fragments. It can also grow on land.

HIRE THE LORD OF THE TREE RINGS



TARANAKI'S LARGEST MOBILE LOG SPLITTER!

Splits more than 50 cu/m in 8 hours just about anywhere on your farm.

Lifts and splits massive rounds straight onto your trailer.

\$200 per hour + GST including operator.

FOR MORE INFO, CALL JOE GOODIN
TEL: 027 688 5372

NZ's Leading Dairy Effluent Management Specialists



nevadagroup.co.nz | 0800 464 393

Treat your animals to the best of summer

Sow the right chicory this spring, and even if the season turns dry later, you'll still be able to give your animals leafy, delicious summer grazing.

It's all to do with fast establishment, high yield and a deep tap root that keeps 501 Chicory lush and green when ryegrass turns brown.

Your animals will thank you, and you'll sleep better at night, knowing farm grown feed is much cheaper than supplement.

Irresistible eating

Animals love 501 Chicory – it's tasty and easy to eat, and good for them, too. Energy-rich, full of protein, and packed with macro and micro-nutrients, it can be digested quickly, and is much better quality than summer pasture.

Plus it's safe to graze when facial eczema makes grass high risk; sheep don't need to be transitioned onto it the same way they do with brassicas, so your lambs won't get checked, and there's usually less wastage.

Worm burdens are generally lower in chicory crops than they are in summer pastures, too.

Graze early, earn more

501 Chicory is an annual, so it jumps out of the ground faster than perennial cultivars, and is ready to



Your animals deserve the best.

graze sooner. That gives up to one more full grazing than other chicories, or as much as 550 kg extra dry matter per ha.

For dairy farmers, at a payout of \$9/kg milksolids, that equates to a potential gain of \$450/ha.

Give grass a rest

The hot, dry summers we are experiencing more often in Taranaki can be hard on your existing pastures, especially if you aren't able

to protect them from over-grazing.

Paddocks of 501 Chicory are the ideal antidote. When you graze these, you're not only looking after your animals, you're also giving stressed ryegrass a break, so it can bounce back faster after rain.

Mineral miner

That big tap root doesn't just help 501 Chicory keep growing in dry weather – it mines the soil for excess

minerals like nitrogen and potassium.

Sow it on your dairy effluent blocks, and after grazing, the cows will happily help redistribute those essential nutrients more evenly back around the rest of the farm.

Bonus: Crops of 501 Chicory are also good for your soil structure!

Leach less

We hear a lot about plantain's potential to mitigate nitrogen loss, but science has shown us chicory can be equally helpful.

In research trials, cows grazing chicory excreted significantly less nitrogen every time they urinated, reducing the nitrogen load in the urine patch compared to ryegrass clover pasture.

With urine patches major contributors of nitrogen loss from grazed systems, averaging 700 kg/ha nitrogen per urination in traditional pastoral farming,

this is a key benefit for 501 Chicory.

What next?

Call your seed merchant to order 501 Chicory for spring sowing, if you haven't already.

Bruce Paterson and
Janelle Gillum
Barenbrug

NZ FARMERS LIVESTOCK

For all your
Livestock requirements
Servicing the Coast

Contact
Bryan Goodin - 027 531 8511
Sheldon Keech - 027 222 7920

NZ FARMERS LIVESTOCK

**STRATFORD FEEDER
CALF SALES**

Fridays at Stratford A& P Showgrounds
Sales start at 1pm

Contact:
Bryan Goodin - 027 531 8511
Sheldon Keech - 027 222 7920

Lack of services concerning

Rural communities are suffering through a lack of access to decent health services, it is dangerous and it is time something was done about it says Rural Women New Zealand.

"The health and wellbeing of rural communities is at risk of further deterioration if something is not done soon to resolve the issues facing people who live, work and play in rural Aotearoa New Zealand," says RWNZ National President, Gill Naylor.

"The challenges rural families face with access to health services are just about too many to list on one hand, however, a few that stand out are the lack of rural midwives, lack of rural nurses and GPs, lack of

rural mental health services, delays in emergency services such as ambulances and long distances to travel for such services as allied health and cancer treatment.

"Whilst we are pleased to see the Government commit to both a women's health strategy and a rural health strategy – we are wanting to see resource and plans activated to ensure rural women and girls do not miss out on health needs because of their post code.

"One of the solutions we have heard is increasing the availability of telehealth which we support, however, that will only work where digital connectivity is fit for purpose – and there are many rural communities without this.

"We know the challenges are because of a mixture of business models which don't suit rural communities and global challenges with the covid pandemic, staffing, and training, however, the Government really have to take the lead by resourcing solutions.

"Rural communities are the backbone of Aotearoa New Zealand and deserve equity in the provision of health services."

"RWNZ is looking forward to working with the Government and health providers to ensure that the rural health strategy and women's health strategy work for rural communities – our lives depend on it," says Mrs Naylor.

Timing Is Everything!
Looking To Sell?
Contact Me...

Dean Smith
027 470 5415
"Your Rural/Lifestyle Specialist"

**firstnational**
REAL ESTATE
Collective®


Licensed REA 2008

Captain cool season plantain
Leach less. Feed more.





IT'S NOT ONLY FEEDING KIWI COWS

Benefitting thousands of Kiwi families

So many New Zealanders share the financial fruits that come from Kiwi-grown Pioneer® brand seeds. Starting with the Gisborne farmers whose land the seed is grown on, to your local merchant who supplies and supports it, to your contractor who plants and harvests the maize. And to you, the farmer. For Kiwi-grown seeds and Kiwi feed for Kiwi cows, choose Pioneer.

Talk to your Pioneer Area Manager or local merchant.
www.pioneer.nz/maize-silage



Foot and Mouth threat looms

A highly infectious disease affecting cloven-hoofed animals like cattle could upend New Zealand's economy if it crosses our border.

Cases of foot-and-mouth disease detected in Indonesia in May, and virus fragments found at the Australian border in July have caused authorities here to step up their work at the border.

Associate Professor Carolyn Gates, Veterinary Epidemiology & Education, Massey University, comments:

"Almost every cow that gets exposed to foot-and-mouth will get sick from the virus with many developing painful blisters in their mouth and skin around their hooves that causes them to stop eating and become lame. Although most adult cattle will recover within a couple weeks, the fatality rate can be quite high in calves. Foot-and-mouth is a serious disease because it spreads rapidly and affects many different livestock species including cattle, sheep, goats, deer, llamas, alpacas, and pigs. The production losses for livestock industries during an outbreak can be very high, which is why there are a lot of international regulations and procedures in place to stop it spreading to countries that are currently foot-and-mouth free."

"We've seen from outbreaks worldwide that foot-and-mouth takes a major mental toll on farmers as well as all of the other professionals involved in the outbreak response including



As yet unseen in New Zealand, Foot and Mouth Disease continues to be a lingering threat.

veterinary teams, animal health officials, diagnostic laboratory technicians, epidemiologists, and policy-makers. It is devastating to watch your animals get culled to prevent others from getting sick especially when you have spent years carefully improving the genetics of your herd. Then there is the longer-term uncertainty around when the outbreak will end and how long the restrictions on international trade will last so it could be months to potentially years before you can get back to business as usual."

"Foot-and-mouth is a highly infectious and stable virus that can survive for days to weeks in the environment depending on temperature, humidity, and sunlight.

This means the virus can easily spread long distances through movements of animals, people, vehicles, equipment, and feed products between farms. We also know that there is a high rate of local spread between neighbouring farms from windborne and waterborne transmissions as well as other vectors like birds, wildlife, and insects that can physically transport the virus."

"New Zealand is lucky in many respects when it comes to managing the risks of infectious disease outbreaks because we are a geographically isolated island and therefore have a lot more control over what crosses our borders. We have excellent biosecurity measures in place around importing live animals and animal products for commercial supply chains so the risk from those sources is very low. However, now that the borders are opening

up again, we are likely to be getting a lot more tourists from areas of the world where foot-and-mouth is widespread in their livestock populations. This means they can potentially be bringing the virus into New Zealand on their clothes and footwear or through contaminated food products that they don't declare at customs.

The danger is if they then visit tourist hotspots or go on tramps where they are in contact with New Zealand livestock. This is a really difficult risk pathway to control because many tourists just don't know or just don't care about their potential role in bringing foot-and-mouth disease into the country."

Dr Mary van Andel, Chief Veterinary Officer, Ministry for Primary Industries, comments:

"The most likely route of introduction of foot-and-mouth into New Zealand would be through illegally imported contaminated meat and that meat being fed to pigs.

"Foot-and-mouth spreads quickly and animals can spread disease before showing any clinical signs. In the unlikely event that foot-and-mouth arrives in New Zealand, many farms might be infected before we confirm the first case, especially as some species of animals do not show clear clinical signs (for example sheep).

"Once foot-and-mouth disease is introduced into an animal population, it can

be transmitted in a variety of ways, the most common being direct contact with an infected animal. Once infected, animals are capable of spreading high numbers of viral particles to other animals and into the environment.

"While the disease is not a food safety concern and does not cause disease in humans, it is possible for a person to spread the virus between susceptible animals. The disease also can be spread when susceptible animals come into contact with feed, feeding utensils, vehicles, clothing, or holding facilities contaminated with the virus.

"Early detection of foot-and-mouth (or any exotic animal disease) is important for it to be successfully eradicated. Livestock owners should remain vigilant for signs or suspicion of the disease and report them immediately to their veterinarian or to the Exotic Pest and Disease Hotline (0800 80 99 66). The faster the disease is detected, the sooner its spread can be controlled (primarily through stopping animal movements), and the disease can be eradicated."

Sandfords Manaia Golf results

August 6. Saturday Men.
1. Kevin Murrell. 2. Greg Elliott. 3. Mike King.

August 13. 1. Mike King.
2. Greg Elliott. 3. Nathan Ngere. 4. Denis Hurcomb.

Junior. 1. Jude Poole. 2. Carter Symes. 3. Jayden Poole.

Next issue due out September 8.
Phone us today to advertise 761 7016

NEW SHED

An exciting development in Value Farm Sheds.

We've been building quality Farm Sheds for over 50 years. Now we have this exciting new option: Clearspan Sheds. You can get an estimate + the plans simply by giving us a call!

VALUE Building Supplies

BuildLink Buy Better Build Better

1 KATERE RD, NEW PLYMOUTH
PH: 06 759 7435
EXT: 715

JAMES STREET INGLEWOOD
PH: 0800 245 535
www.valuebuilding.co.nz

Corkill SYSTEMS LTD

5 TASMAN ST, OPUNAKE
FREEPHONE: 0800 107 006 PH: 06 761 7531 - FAX 06 761 7336

Silent Diesel and Industrial Tractor Mount Generators
For Dairy Sheds, Houses, Pump Sheds and Commercial Sites

Tractor Mounts Features:

- Supplied with weather proof cover
- Dials facing cab (one man operation)
- Heavy Duty Driveshaft
- Heavy Duty Construction
- 1000RPM Direct PTO Driven (no gearbox or belts)
- Backup and Repair Service for all Generators

Sizes to suit all situations

A full range of cabling and outlet options to suit your personal requirements

Check out our new website
www.corkillsystems.co.nz

Kaponga WI tests general knowledge

The August meeting of the Kaponga WI was held at the home of Nan Stokes in New Plymouth with only one apology. The roll call was 'my favourite baking cookbook,' with the favourites many and varied, but the Edmonds Cookbook is still the go-to for basic baking and hints. Most have



The winning group in the quiz. From left Jo Ellis, Dot Hughes, Margaret Arbuckle and Margaret Broomall (seated).

a book to write borrowed / copied / inherited recipes into with the internet also being a great source of recipes. Dot Hughes gave a full report on the unveiling of the seat in King Edward Park in Hawera, which was well attended by members and the Mayor of South Taranaki despite the weather. The seat is to commemorate 100 years of WI NZ. More beautiful tiny knitting was collected for donation to SANDS to dress sleeping babies for parents to spend time with. Dot Hughes and Jo Ellis had bought along their prizewinning entries in the competitions at the Wellington meeting for us to enjoy. Congratulations ladies we are proud of you. Several donations were approved and more discussed. Plans are in place for our October birthday and this promises to be loads of fun. After a delicious shared lunch Nan had prepared a several page quiz and members were divided into groups of four. The winners were presented with a chocolate medal and got an admirable 43 out of 55, with the second place getters very close behind. Hostess Nan was thanked for arranging a fun day. Competition results; An Unusual Picture Frame. 1. Nan Stokes. 2. Dot Hughes. 3. Joy Eliason. Chocolate Afghans. 1. Jo Ellis. 2. Diane West. 3. Nan Stokes.

Carolyn Nicholas

Persistence pays off for Phyllis

The South Taranaki Federation of Women's Institutes held its final event to celebrate 100years of Women's Institute in NZ on Tuesday July 19. They unveiled their long awaited seat that they were given permission to have installed at King Edward Park in Hawera. Thirty eight members attended in very blustery conditions, but in fine weather. His Worship, Mayor Phil Nixon and Fran



The new seat at King Edward Park Hawera.

Levings from the South Taranaki District Council also attended. Immediate Past President, Phyllis Malcolm, who had persisted to get the seat with a plaque, placed in the park cut the ribbon with President, Bernadette Gopperth, while Mayor, Phil Nixon looked on. Curator of the Park, David Bruce was unable to attend, but had a WI Recipe Book that a relation had owned and asked Fran to present it to the Federation for its safe keeping. After speeches and many photos, members attended a Luncheon at Indian Zaika, in Hawera to hear Vice President, Lynette Gargan present her National Conference report which was held in Lower Hutt in May. President, Bernadette Gopperth, then presented the trophies and certificates. Federation Robert Young Rose Bowl: second overall as a result of the following:- Christmas Scrap Book Page – Dorothy Hughes, Kaponga first. Christmas Stocking – June Hartwell, Turuturu third. Christmas Decoration – June Hartwell, Turuturu fourth equal. "Special Award" – Certificate for 'Best Overall Interpretation of the Christmas Theme.' Silver Tray – Embroidery – June Hartwell, Turuturu second. Silver Tray – Embroidery – Dorothy Hughes, Kaponga third. Woolcraft Trophy – A Sherpa Hat – Gill Campbell, Maata first. West Coast Jubilee Trophy – Federation Scrap Book – Janice Walsh, Manaia/Federation third. Sudley Trophy – Federation Annual Report – Freda McGurk, Turuturu/Federation first

Helen Cameron
Federation Secretary

Furniture Zone

make your house a home

BEDROOM

DINING

LOUNGE

HOMEWARE

BED RUMOURS

EMPIRE FZ14 Queen

Mattress + Base

* Luxuriously plush pillow top

* 5-year warranty

Only

\$1519

Save \$800

INTRO OFFER!

JASPER

3+2 Seater

Lounge Suite

* Available in 3 colours

* Sustainable harvested timber

Only

\$1499

Save \$500

Sale ends 31 August 2022.

Terms, conditions and exclusions apply.

Stock may vary in store. See instore for details.

INTEREST FREE FINANCE OPTIONS AVAILABLE

298 DEVON STREET EAST | PH 06-215-3020

OPEN TUE-FRI 9:30AM-5PM & SAT-SUN 10AM-5PM

furniturezone.co.nz

BROWNING

& (MATTHEWS)

OPTOMETRISTS

As well as regular eye exams,

we offer a variety of specialist services

including low vision support and

post-operative care

Fortnightly clinics

To book an appointment

phone (06) 759 4126

www.matthews.co.nz

CoastalCare

Haumaru ki Tai

Health and Community Centre

Haumaia ki runga, Hauora ki raro


Capturing the Fall



Visitors enjoying the gallery.



The Lysaght Watt Gallery in Union Street Hawera.



A Shared Inspiration

ROSANNE OAKES
ELIZABETH HARRISON

Printmaking & Mixed Media

22 AUGUST - 17 SEPTEMBER 2022

Opening Event: 2.00pm Sunday 21 August 2022
All welcome

LYSAGHT WATT GALLERY

4 - 6 UNION STREET, HAWERA
Open: Mon - Fri 10am - 3pm Sat 10am - 12.30pm

Lysaght Watt Gallery was pleased to recently host an opening event for a new joint exhibition ‘Capturing the Fall’/‘A Shared Inspiration’ and showcases the work of artists Brad Mosen, Keeley Eastwood, Rosanne Oakes and Elizabeth Harrison.

Brad and Keeley are a Whanganui-based

photographer and printmaker and Keeley reflects: ‘When I consider the themes of this exhibition, I personally see crossover between the human, the animal, the spiritual and the way we are all linked in a symbiotic relationship’.

Rosanne and Elizabeth are both local South Taranaki

printmakers and sure to delight with their range of drypoint, intaglio and woodcut pieces and other mixed media works.

The exhibition runs from Monday August 22 – Saturday September 17, 10-3 pm Mon-Friday, 10-12.30 Saturday.



CAPTURING THE FALL

BRAD MOSEN *Photography*
KEELEY EASTWOOD *Printmaking*

22 AUGUST - 17 SEPTEMBER 2022
Opening Event: 2.00pm Sunday 21 August 2022


LYSAGHT WATT GALLERY

4 - 6 UNION STREET, HAWERA
Open: Mon - Fri 10am - 3pm Sat 10am - 12.30pm



Advertise your event in the Opunake & Coastal News

Call our sales team on
06 761 7016



VOTE FOR DONNA CRAM IN TARANAKI REGIONAL COUNCIL'S SOUTH TARANAKI CONSTITUENCY

Experienced community leader Donna Cram has announced she's running for Taranaki Regional Council, adamant the region can grow its economy while protecting and enhancing our natural environment at the same time. In fact, she believes the strength of the environment and the economy will go hand in hand.

Cram has a long history of community advocacy, notably as founder and Chair of Taranaki Catchment Communities (TCC); a non-profit aiming to ensure a more environmental, economic and socially sustainable future for Taranaki. In just two years, she has helped to create 13 local catchment groups and brought together more than 300 farmers on a range of initiatives.

In her advocacy for Taranaki, she has grown a strong network of contacts that includes MP's, government departments such as MPI and the Ministry for the Environment, and science leaders at Massey University. Cram says she has a whole-of-community approach that goes beyond farming alone. Ultimately, she says she's driven simply by supporting people in what is an unprecedented time of change.

“Taranaki farmers have a fantastic opportunity to be world leaders in facing up to current challenges. The whole region is impacted by how well our farmers perform, and success in the sector can flow through to helping our whole community to overcome the other issues we're facing today.”

Outgoing TRC deputy chair Michael Joyce says Donna understands and will represent all constituents, whether they're rural or urban. “Donna has the skills and determination to be a councillor who will make a significant contribution to the future of Taranaki,” he says. “Her strong leadership and governance attributes have already benefited the Taranaki environment and economy.”

Cram has lived in South Taranaki almost her whole life. She describes herself as someone who is passionate about finding solutions to issues, and is constantly coming up with ideas and bringing them to life. She has mobilised nearly 100% uptake among local farmers on a pest-free initiative, served on a number of community organisations, including as chair of the Auroa School Board of Trustees and Awatuna Playcentre, and has led efforts that secured \$1.25 million in MPI funding for TCC in the last year.

“Integrity is easy to talk about and hard to prove, but I've shown that I put action behind what I say. I believe in collaboration and getting communities together - good discussion leads to good ideas, and that's what being on council should be about. Donna is standing for the TRC's South Taranaki Constituency. Voting opens on September 16 and closes on October 8.

For more information, contact Donna Cram on 027 699 0080

Vintage Car Club gives helping hand for Daffodil Day

The Daffodil Day Car Show is a Vintage Car Club of NZ national event. The 36 branches are asked to work with the Cancer Society to stage an event. The Taranaki Branch Event is the Daffodil Day Car Show at the Hawera Primary School Playing Field on Sunday August 28



This year's Daffodil Day Rally for Cancer will now take place on Sunday the 28th of August due to last week's postponement. See you at Hawera Intermediate from 10 am- 3pm Sunday 28 August.



TARANAKI VINTAGE CAR CLUB



Daffodil Rally for Cancer

SUNDAY 28 AUGUST 2022

10am-3pm

Hawera Primary School,
South Rd, Hawera



Proudly supporting the
Cancer Society
Te Kaitiaki Hauora

\$5

Vehicle entry fee
All fees donated to our
local Cancer
Society

General public - free

CHURCH NOTICES

- Opunake Co-operating Parish**
Havelock Street, Opunake - St Pauls - 9.30am every Sunday
Rahotu - Wesley - 11am first Sunday of the month
- Okato Co-operating Parish**
Okato, St Paul's – Sunday Service every 1st and 3rd
Sundays of each month, 10am
Okato, St Paul's – Prayer Meeting, first Thursday of each
month, 7.30pm
Oakura, St James – Sunday Service every 2nd and 4th
Sundays of each month, 10am
Oakura, St James – Prayer Meeting, first Wednesday of
each month, 7.30pm
- Opunake Catholic Church**
St Martins, Pungarehu: 8.30am every 2nd and 4th Sundays
of the month
Our Lady Star of the Sea, Opunake: 10am every Sunday
Other areas
Manaia - Sacred Heart - 1st, 3rd Sat at 5pm
(2nd, 4th & 5th Sat at Hawera's St Josephs)
Kaponga - St Patricks, Sunday 8.45am
All welcome
- St Patricks Catholic Church, Okato**
Saturday Vigil 6.00pm - 1st, 3rd & 5th Saturdays
- The Wave**
Pentecostal Church 64 Domett St, Opunake
Sunday Services 10.30am
Women's Group 10am Tuesday
Men's Group 7pm Wednesday
Come along or contact
Belinda Philp
027 935 6191
- St. Barnabas Anglican Church**
141 Tasman St, Opunake
Sunday Services 10am
Communion 2nd, 3rd & 4th Sunday
Prayer & Praise 1st Sunday
Every 5th Sunday all 4 churches gather for
a Combined Service
- Okato Community Church**
Meets 10.30am Sunday at Hempton Hall.
Everyone welcome

Surf n Turf



Robyn Clough and Graham Powell have opened Surf and Turf Takeaways.

266 Devon Street East
Opposite Vospers.

Serving hearty takeaway
food, Burgers, Salads
and desserts.

Robyn formerly from
Opunake and Graham
from Okato welcome all
Coastal visitors to their
establishment for some
great kai.

Call ahead to secure
your order 0284284328.

Check the menu on their
facebook page.



**Spring
Flower Show**

Saturday August 27, 12pm to 4pm
Sunday August 28, 10pm to 3pm

Hawera Community Centre,
Albion Street

Displays with goods for sale ..
plants, seeds, seedlings, crafts.
Refreshments available
Admission \$3 - Children free
Society Sales Table

Entries & Enquiries
Ph Heather
06 754 7966 or
021 046 4401



OPEN WEDNESDAY, THURSDAY & FRIDAY
10.30AM- 2PM AND 4.30PM - 7.30PM

Occasional pop-up weekend shifts which
are announced on our Facebook page



266 Devon Street East,
New Plymouth
Ph 028 428 4328

A literary homage

‘A homage to Patea and districts is how the editors of a new community poetry publication describe the book they are currently editing.

Dr Vaughan Rapatahana and Trevor M. Landers have teamed up to edit and compile a bilingual volume of poetry and song that pays tribute to Patea, Waipipi, Waverley, Waitotara and surrounding districts. Rapatahana, an internationally recognised poet grew up in Patea, and now commutes between Hong Kong, the Philippines and New Zealand. Landers, the editor of the bilingual journal, Matatuhi Taranaki, has also been published in a phalanx of national and international poetry journals. The pair are calling for submissions from the public, and are hoping to have a final draft by Christmas or very early in 2023. When asked what inspired the project, this was the response:

“I guess it is our way of giving back. Vaughan has run many poetry workshops in the district before and we both have whakapapa links and affinities to this place, and so this project is about aroha and inspiring the next generation. This area is a rich cultural heartland and we think it deserves to be memorialised in print.” Landers said.

The Project has already received funding from the Creative Communities Scheme administered by the South Taranaki District Council, which will allow for material written in Te Reo Maori to be verified, translated and edited to a very high standard. Further funding bids are in progress to cover printing and publication costs. Donations are welcome.

“Though we as editors are voluntary and thus far unpaid, the reward so far has been the astoundingly high quality of work submitted to us. We have been to several primary schools and the calibre of the work leads us to believe there is no shortage of talent here. The workshops we have done so far have been marvellous.

Kids who don’t think they can write discover they can, and we expect that will intensify when they see their work in print” Landers said.

The editors expect a publication could easily run to 150 pages in length. The deadline for submissions is September 30th 2022. Those who wish to submit poetry, karakia, moteatea and songs etc for publication can do so by emailing these to: matatuhitaranaki@gmx.com together with a 30-50 word biographical note that tells the reader something interesting about the submitting author. In time, a copy of the work will eventually be loaded to www.matatuhitaranaki.ac.nz and deposited in local libraries but a very limited print run will be made available before this occurs. “If people value this taonga, get in early” they say. All work which does not make the book will be considered for the 2023 issue of Matatuhi Taranaki.

Elektra

Hāwera’s King Edward Park will present a stunning display of light shows and live performances for Elektra.

Elektra, in its third year, is a light event created to replace the previous Fireworks Spectacular.

“We’re excited to bring this event back after covid regulations meant it couldn’t run last year. The event to be even bigger and better than before.”

The past two events have been popular, with the park packed full of crowds, ready to look at the lighting displays.

This year there will be plenty to do, With glow-in-the-dark artworks completed by children in the South Taranaki district through the holiday programme, glow zones, and live performances from Circus in a Flash and Mitch with a Guitar.

“There will also be a train going around the lake for the children. There will be something for everyone.”

“This year’s theme is Friday Night Fever with space vibes and stunning light displays.”

There will be food trucks spaced throughout the park, so there will be lots of opportunities to eat good food while watching the live performances.

“We’re so excited to provide this free family-friendly, fun and safe event for our community.”

Elektra.: September 23, 6pm-9pm.
Where: King Edward Park, Hāwera



Pupils from St Joseph’s School, Patea after lacing their poem, ‘At Manu Bay’ for the new book of poetry being edited by Vaughan Rapatahana and Trevor M. Landers.

elektra

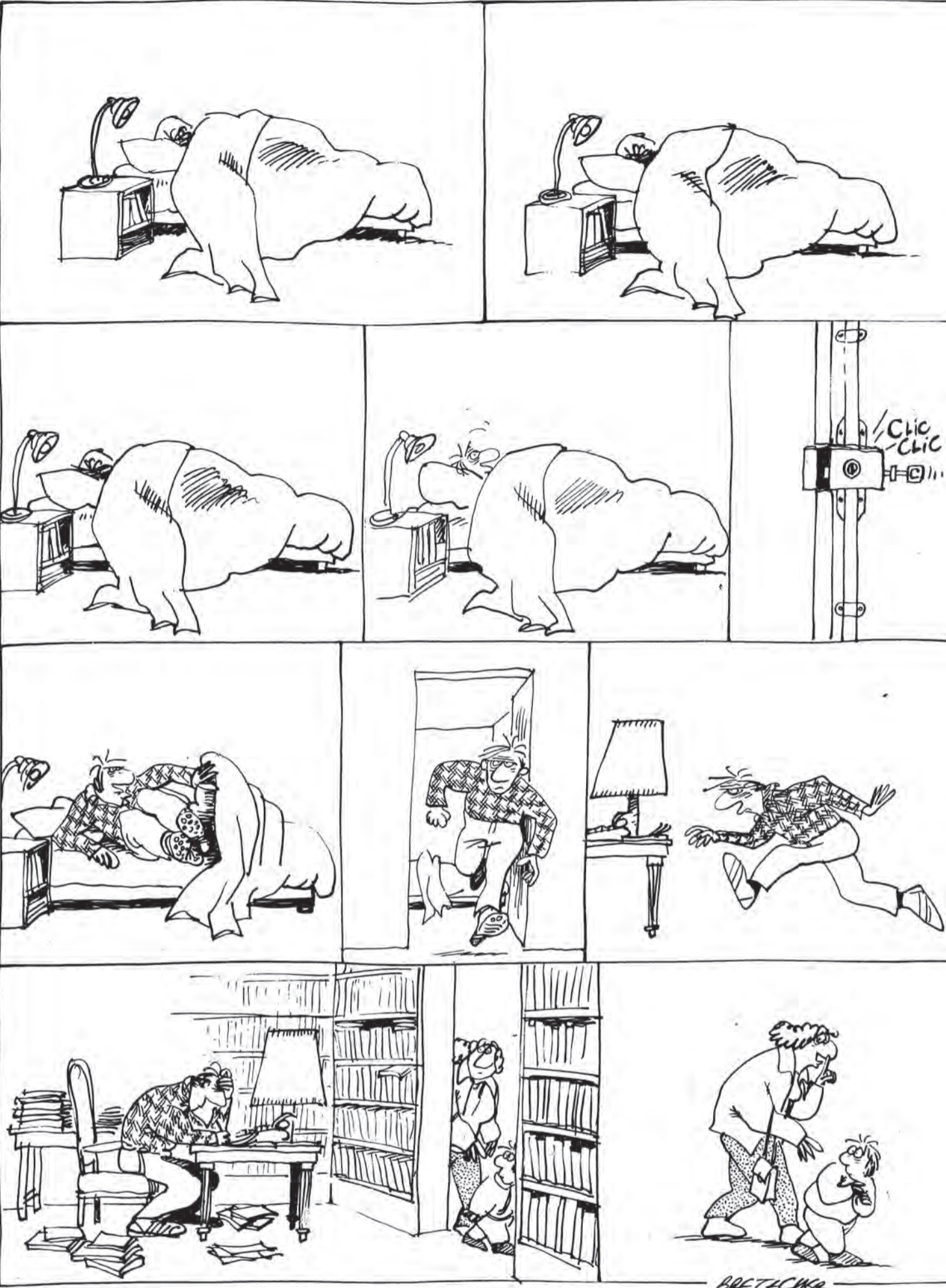
A COMMUNITY LIGHT EVENT

FRIDAY NIGHT FEVER

FRIDAY 23 SEPTEMBER | 6 - 9PM
KING EDWARD PARK, HĀWERA

BRING THE FAMILY ALONG TO SEE THE PARK DECORATED IN LIGHTS
PERFORMERS - CIRCUS IN A FLASH + MITCH AND HIS GUITAR
GLOW IN THE DARK FACE PAINTING | FOOD TRUCKS

WRITINGS



What's On Listings

ONGOING
Movies at Everybodys Theatre in Opunake: Playing several days and nights each week. Refer timetable in newspaper.

MONDAYS: Tainui Day Centre - St Barnabas Church Hall, 141 Tasman Street Opunake: Each Monday 10 am - 12:230 pm. Information call Jenny 7618080 or Glenys 6558025

TUESDAYS
Opunake Walking Group: Every Tuesday 10am. Meet outside Club Hotel on Havelock St. Phone Margaret 027 477 5600 for more info if needed, or just turn up.

WEDNESDAYS
Lisa Keen Audiology at Coastal Care, Opunake: Wednesdays 9am - 5pm, for an appointment call 027 591 4222 - 0800 555 676

Okato & District Historical Society open every Wednesday: At the Okato Community Trust Hall, 47 Cumming St, Okato. phone Meg on 06 752 4566.

Opunake Embroiders Guild: Meet 2nd and 4th Wednesdays of the month, 10.30am-3pm at the Opunake Business Centre, Napier St, Opunake. Just come along or phone Sheryl 06 761 8769.

Okato Market: In Hempton Hall, Okato 4.30 to 6.30pm.

Free singing experience with Taranaki Harmony Chorus: Meet every Wednesday at Inglewood Mamaku Centre, 7-9.30 pm Phone Helen 021 296 0700.

THURSDAYS
Coastal Young Farmers: Meet 2nd Thursday of every month at 7pm at Butlers Reef Bar & Cafe, Oakura.

Egmont Euchre Club: Every Thursday 1pm at the Opunake Bowling Club. Inquiries, 06 761 8277 or 06 761 8337

Taranaki Country Music Hall of Fame, Manaia: Running every Thursday night from 7.30pm, 11 Surf Highway, South Road, Manaia.

FRIDAYS
Eltham Business Association Friday Markets: 9:30am to 1pm, Carpark of Touch Point, High Street, Eltham.

Singer Songwriters, New Plymouth: Last Friday of the month at Little Theatre, 29 Aubrey St, NP from 7-11pm.

WEEKENDS
The Historic Cape Light & Museum: Open 11am – 3pm weekends, Bayly Road, Warea.

AUGUST 22 TO SEPTEMBER 17
‘A Shared Inspiration’ and ‘Capturing the Fall’ exhibitions: At Lysaght Watt Gallery, Hawera.

AUGUST 27 TO 28
Hawera Horticultural Society Spring Flower Show: At Hawera Community Centre.

AUGUST 28
Taranaki Vintage Car Club Daffodil Rally for Cancer: At Hawera Primary School, 10am-3pm.

AUGUST 30 TO SEPTEMBER 23
‘Recollections’ exhibition: At the Village Gallery, Eltham.

SEPTEMBER 5
Opunake & Districts Business Association meeting: At 23 Napier St, Opunake, 5.30pm.

SEPTEMBER 8
Pennylane Bull Sale: At the ‘One Stop Bull Shop’, Midhurst. 11.30am start.

SEPTEMBER 12
Burmeister Jersey Bull Sale: Julian Rd, Warea. 12.30pm start.

SEPTEMBER 14
Coastal Community Transport AGM: Coastal Care Community Lounge, Opunake, 10am.

SEPTEMBER 19
Hawera Water Tower Night Climb: With tthe South Taranaki District Council. 5.30-7.30pm.

SEPTEMBER 23
Friday Night Fever: At King Edward Park, Hawera. With tthe South Taranaki District Council. 6-9pm.

SEPTEMBER 24
Te Korowai o Ngatiruahine Trust Group AGM: Kanihi Marae, Okaiawa, 9am.

OCTOBER 28
Taranaki National Art Awards Ceremony: At Sinclair Electrical & Refrigeration Event Centre, 7pm.

OCTOBER 29 TO NOVEMBER 6
Taranaki National Art Awards Exhibitions: At Sinclair Electrical & Refrigeration Event Centre.

90 Tasman St, Opunake - Ph: 06 761 8550

Arty Tarts

Genuine Home Cooked Food, Pies, Savouries, Fresh Scones. Muffins, Cakes, Slices and Sandwiches.
All Day Breakfast
Open 6am - 4pm
Open 7 Days a week



MOVING?

Subscribe to the
Opunake &
Coastal News
and we'll post
you a paper as
soon as it's out!

06 761 7016

OPUNAKE & COASTAL
NEWS

RECOLLECTIONS:

30 August - 23 September 2022

The family of the late Bjorn Grube has kindly donated a number of Bjorn's artworks to the Gallery as a fundraiser.

Many will remember Bjorn as a renowned watercolour artist who regularly exhibited his paintings around Taranaki. A dedicated member of our Gallery, as well as exhibiting, Bjorn was a regular volunteer, both as a sitter and as a willing supporter of our working bees and fundraising events. We were privileged to hold his Retrospective Exhibition in 2016 shortly after he and his wife, Doreen retired to New Plymouth. Sadly, Bjorn



One of Bjorn Grube's artworks on display at the Village Gallery, Eltham.

passed away in November 2020.

Born in Denmark and formerly living in Hawera, Bjorn painted for over 20 years, mainly in watercolour. He exhibited regularly in club exhibitions and sold paintings in England, Denmark and New Zealand. Bjorn attended many workshops and enjoyed the challenge of painting outdoors.

The framed works will be sold in a silent auction while a large number of unframed paintings will be offered by gallery donation - cash and carry.

Sue and Henry Morton

Little Kitchen at Coastal Greengrocer



Lene Croucamp is serving up a whole lot of goodness from Little Kitchen at Coastal Greengrocers. Soups change daily with options of Thai Pumpkin and Beef and vegetable, Kumara and Choritzo also on offer are delicious Bento Bowls which fly out of the store.

Lene also makes yummy Cottage pie, Lasagne, Lamb Shank and Butter Chicken meals ready to take home and heat up.

See her ad on this page for contact details.

COASTAL GREENGROCER + STORE

"LITTLE KITCHEN"

Hot soup from 10am and hearty takeaway meals that will just need heating.



Delicious Bento Bowls

Get in quick, they sell out fast! Pop in and pick up a meal or two!

52 Tasman Street, Opunake

027 9002533

RECOLLECTIONS Bjorn Grube (late) Watercolours

a silent auction fundraiser



30 August - 23 September

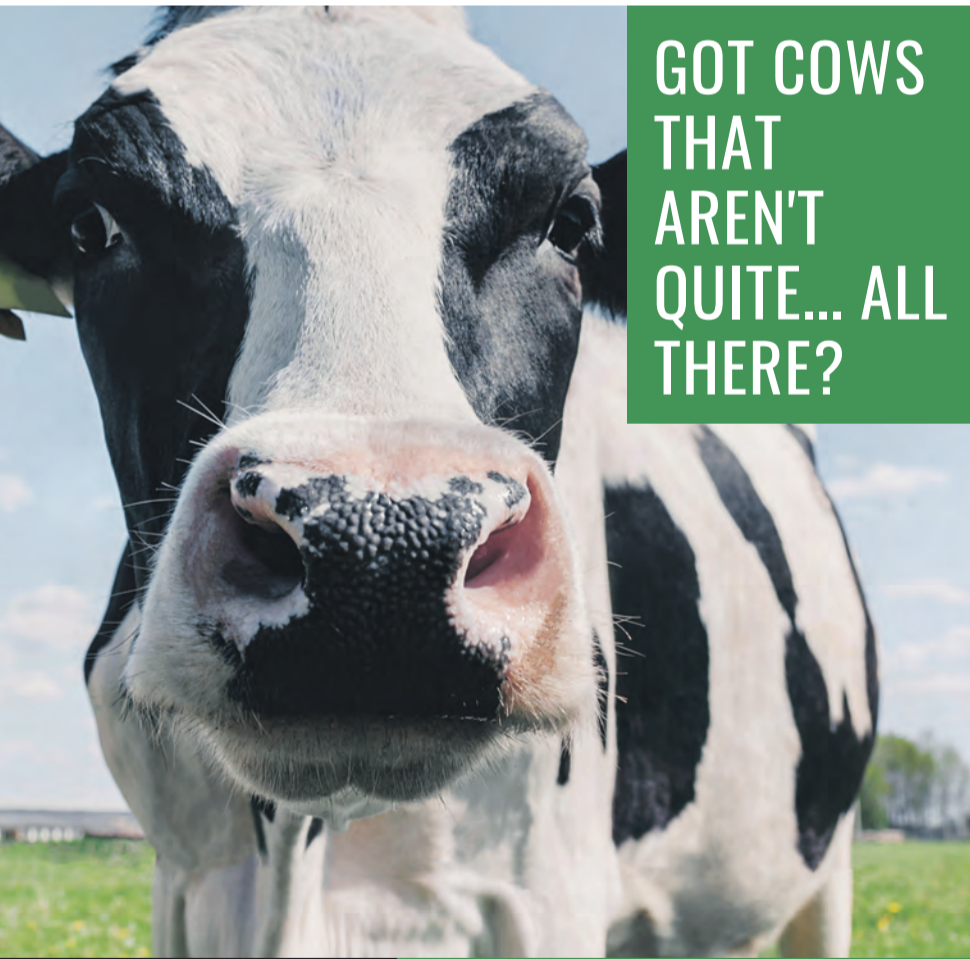
THE VILLAGE GALLERY

166 HIGH STREET/ ELTHAM

Hours/ Tues - Fri: 10.30 am - 2.30 pm

Sat: 10.30am - 1.00pm

Contact: 0278732335



GOT COWS THAT AREN'T QUITE... ALL THERE?

EVERYBODY'S THEATRE OPUNAKE

72 Tasman Street, Opunake - www.everybodystheatre.co.nz Phone 027 383 7926

Adults \$12, Students 4-16yrs and Senior Citizens \$10, Under 4 free

DRAGON BALL SUPER

Aminated/Action | 1hr 39mins | M

Thurs Aug 25th 7pm, Sat 3rd Sept 1pm

THE RAILWAY CHILDREN RETURN

Drama, War | 1hr 35mins | PG

Sun 28th Aug 7pm, Fri 2nd Sept 7pm

PHANTOM OF THE OPEN

Comedy | 1hrs 46mins | M

Fri 26th Aug 7pm

GLORIAVALE

Documentary | 1hr 29mins | M

Thurs 1st Sept 7pm

BEST BIRTHDAY EVER

Animated, Family | 1hr 15mins | G

Sat 27th Aug 1pm

NORTHSPUR

Action | 1hr 40mins | R16: Violence

Sat 3rd Sept 7pm

BULLET TRAIN

Action | 2hrs 32mins | R16: Violence

Sat 27th Aug 7pm

*BOUTIQUE * MURU


Action, Drama | 1hr 44mins | M

Sun 4th September 1 pm & 7 pm

RUBYS CHOICE

Drama | 1hr 57mins | PG

Sun 28th Aug 1pm





Kane Barrett
027 403 6469
www.affco.co.nz



Brendon Kelly
027 664 6605
www.silverfernfarms.com



Bruce Thompson
027 445 5285 or
Nigel Corbett
027 453 7602
www.anzcofoods.com

ANZCO, AFFCO, and Silver Fern Farms are working with CoastalCare to help you take care of your "special animals", donating proceeds to CoastalCare Health Trust to help us with the building extensions we need to get closer to our fundraising target!

Don't be shy!

ARE YOU RECENTLY

Married?

We would love to share your special day with our readers! Send in your photo and details of how you met etc, to: editorial@opunakecoastalnews.co.nz





PENNYLANE

BULL SALE

THURSDAY 8TH SEPT @ 11.30am

Hereford Pedigree & Purebred 2 & 3 yrs
Angus Pedigree 2 yrs
Jersey 2 & 3 yrs
Jersey 18 mths
Belted Galloway 2 yrs

Sale with a Difference

- * Family Run Bull Sale
- * Fair Dinkum Pennylane Bull Plan payment 20th Dec 2022 or choose a plan that suits you
- No Interest - No fees - No deposit - No hassle
- * You Choose your Invoicing Livestock Company - all Agents welcome
- * Free Grazing until you require the Bulls
- * Animal Health - All bulls TB & BVD Tested Negative May 2022 & Fully BVD Vaccinated

THE ONE STOP BULL SHOP

Kevin & Sherry Collins & Family | 1167 Croydon Road, Midhurst

Ph 06 762 8058 or 027 4415 935

email: honnorfamil@xtra.co.nz Facebook: Pennylane Bull Sale & Hire

8TH ANNUAL COASTAL HIGH BW YEARLING JERSEY BULL SALE

ON ACCOUNT OF THE BURMEISTER PARTNERSHIP

MONDAY 12TH SEPTEMBER 2022, 12.30PM START

Julian Road Warea - behind old Warea Dairy Factory

Auction comprising of:

- 4 x 2 year old recorded Jersey bulls ave BW303
- 67 x recorded Jersey yearling bulls ave BW307. BW's up to 399



- Bulls very well grown with great temperaments. Bulls already averaging over 300kg
- All bulls reared on current property since purchase at 4 days old from 4 Coastal Taranaki dairy farms
- Free grazing available until 10th November 2022
- Pre-auction inspections are welcomed
- TB, BVD and EBL tested negative and Lepto vaccinated
- Free credit until 20th December 2022
- NZFLL Bull Plan available

Contact:

Agent: Bryan Goodin 027 531 8511 Owners: Murray Burmeister 027 721 1282
Sheldon Keech 027 222 7920 Ben Burmeister 027 426 9589

NZ FARMERS

LIVESTOCK

Burmeister Bull Sale



The Annual Burmeister Bull Sale is being held at Warea on Monday September 12th with New Zealand Farmers Livestock Limited running the auctions on the day.

SITUATIONS VACANT

WE'RE HIRING

Are you looking for a fulfilling career?

Positions available:
One apprentice & One qualified tradesperson

Are you:

- Ready to join the workforce in full time employment
- Willing to learn new skills
- Honest, reliable and committed
- to team work?

We can offer:

- An apprenticeship to a career in plumbing, gas and drainlaying
- Varied and challenging work
- Friendly and supportive work environment
- Ongoing training and upskilling

Forget the student loan and earn while you learn.

Houghton's Plumbing has been training apprentices since the '80s. An established business in Taranaki, providing services to domestic, commercial and industrial customers.

Interested in joining the team? Contact us today
Phone: (06)2788883 or email: info@houghtonsplumbing.co.nz



Houghton's

Plumbing, Heating & Gas Ltd



Master Plumbers



Opunake High School
Te Kura Tuarua o Opunake

ŌPUNAKĒ HIGH SCHOOL

ALTERNATIVE EDUCATION TUTOR

Full Time Position

(Start date and timings of work to be negotiated)

This exciting opportunity working with our wonderful ākonga/students has become available at Ōpunakē High School. This position's main focus is: to support students in 'growing into good people' of Aotearoa.

The role involves:

- Creating positive, learning focused relationships with individual students/small groups.
- Designing and delivering tailored lessons/opportunities based on the NZ curriculum.
- Liaising with whanau on personalised learning plans, and compiling interim reports.

Applicant will need computer skills and will liaise with Senior Leadership team.

Enquiries welcome, applications should include a CV and covering letter.

Please apply to:

The Principal
Ōpunakē High School
PO Box 4
Ōpunakē 4645
admin@opunake.school.nz

Applications close Friday 2nd September, 2022

FOR SALE

DETOX FOOT pads available at The Health Shop Centre City 06 758 7553.

BRAGGS APPLE cider vinegar available at The Health Shop Centre City 06 758 7553.

TURKEY TAIL Reishi, Lions Mane, and Shitake mushrooms now available at The Health Shop Centre City 06 758 7553.

IF YOU are sick and can't get in give us a call and we will deliver. The Health Shop Centre City 06 758 7553.



PUBLIC NOTICES



Auroa School

734 Auroa Road, RD 28, Auroa, 4678
office@auroa.school.nz

Applications for Out of Zone Pupils

Auroa School is a decile 8 full Primary School (includes year 7/8 students) located in South Taranaki. Enrolment at the school is governed by an enrolment scheme, details of which are available from the school office.

The Board has determined that there are likely to be 10 vacancies available. No spaces for year 7/8 for Term 4, 2022.

Applications can be made by applying in writing to the school by either post or email and by visiting the school office.

The deadline for applications is 3pm, Thursday 15th September.

If the number of applicants exceeds the number of places available, students will be selected by ballot.

Shaun Kalin, Board of Trustees



2022 Annual General Meeting

NOTICE IS HEREBY GIVEN THAT the Annual General Meeting of the Te Korowai o Ngāruahine Trust Group will be held at **Kānihi Marae, 240 Hastings Road, Ōkaiawa** on Saturday 24 September 2022. All Ngāruahine uri are invited to attend.

9.00 am Registrations/Mihimihi
10.00 am Hui commences

Agenda

- 1. Karakia/Mihimihi
- 2. Apologies (by resolution)
- 3. Pouwhakarae Message
- 4. Board Presentation
- 5. Confirmation of the Minutes of the 2021 Annual General Meeting (by resolution)
- 6. Presentation of the Annual Report to 31 March 2022
 - a. Te Korowai o Ngāruahine Trust
 - b. Te Kiwai Mauī o Ngāruahine Limited
 - c. 2021/2022 Annual Audited Financial Statements (by resolution)
- 7. Presentation of 'Ka Ora Taku Toa' 5 Year Strategy & alignment with the Annual Plan
- 8. Appointment of the Auditor (by resolution)
- 9. Presentation of Trustees' remuneration (by resolution)
- 10. General Business
- 11. Hākari

We encourage all uri to register in advance for this event.

You can register, notify your apology or order a printed copy of the 2022 Annual Report, email info@ngaruahine.iwi.nz. A digital copy of the 2022 Annual Report will be available to download from our website after 26 August 2022, www.ngaruahine.iwi.nz.

This event is being live streamed for uri who cannot attend in person. Information regarding the AGM live streaming will be shared on our Facebook page and our website.

In the event of Covid-19 disruptions, the AGM will be held remotely only.

EGMONT EUCHRE CLUB

meets every
Thursday 1pm at the
Opunake Bowling Club.

Inquiries, phone:
06 761 8277
or
06 761 8337

PROPERTY APPRAISAL

PROPERTY APPRAISAL. Contact Tara Gibson 027 766 4456. McDonald Real Estate Ltd, Opunake.

WORK WANTED

STUDENT LOOKING for part time cleaning or gardening work. Ph 027 644 4008.

Our next issue is out on September 8. Call us on 06 761 7016 to be in it.

COASTAL COMMUNITY TRANSPORT



We are here
to get you there

AGM

14th September 2022
10am CoastalCare Community Lounge

All welcome, tea and coffee provided.



OPUNAKE & DISTRICT
BUSINESS ASSOCIATION

Next Meeting is on
Monday September 5, 2022
at 5.30pm

Hughsons & Associates Boardroom at the
Opunake Business Centre, 23 Napier St, Opunake
(opposite the Coastal Care Medical Centre)

WANTED TO BUY

Stevenson Calf Rearing
MILK & COLOSTRUM WANTED

Picking up 24/7
Our tanker handles large volumes
Ph. Mark or Trish on 0800 350 340 or txt
027 495 2897 E: markstevo@extra.co.nz
Troy Stevenson 027 469 7636
E: troystevo@gmail.com

SCRAP METAL - for all scrap metal Taranaki wide, give us a call. Molten Metals (06) 751 5367. www.moltenmetals.co.nz



TO LET



HUGHSON & ASSOCIATES
Accounting for the future, today
23 Napier Street, Opunake

Office Rooms/ Board Room available
Long term, short term or casual basis
Building has kitchen facilities, wheelchair access, cleaning services and plenty of parking on Napier Street or at rear of building on King Street.
Inquiries to Clare Moss - Ph 06 278 4169
clare.moss@hughson.co.nz



Ph 06 761 7016 to be in our next issue.

TRADES & SERVICES

Heartland Construction Ltd
Builders
Contact Phill - 027 236 7129

P.D. FLEMING LOGGING LTD

Forestry rigged & certified 33 ton loader, National Certificates in Forest Operations, Health & Safety approved. Free assessment on what your trees are worth \$\$\$
Ph: Paul
027 630 9922 or email: paulflems@gmail.com

HCL BUILDERS for concrete work. Ph 027 236 7129.

CARPETS second hand, large selection After Disaster Ltd 223 Devon St West, NP. Phone (06) 769 9265

COASTAL GIB STOPPERS. Phone Glenn 027 524 5745

LAWNMOWING, and section maintenance by local contractor SOS. Free quote. Ph 027 605 8437.

HCL BUILDERS for alterations. Ph 027 236 7129.

McNEIL DECORATING – for all your painting and decorating. Ph: Jason McNeil 027 233 4584.



THE NEWSPAPER
TARANAKI
LIKES BEST



The Opunake & Coastal News is distributed free to every home and business within the rural area, bounded in the north by the New Plymouth City border, extending east to Egmont Village and around to the edge of Stratford, south to the border of Hawera township and inland to Kaponga and through Eltham.

OPUNAKE
BEACH CARNIVAL
A.G.M

7pm
Tuesday September 13th, 2022
Sinclair Electrical and Refrigeration Events Centre

For the Opunake Beach Carnival to continue
we need more volunteers

All welcome
Refreshments provided

Call Andy Whitehead
027 499 5203



FIRST RATES INSTALMENT

Ratepayers are reminded that the last day for payment of the first instalment of rates for 2022/2023 without incurring a penalty will be **Wednesday 31 August 2022**.

WD Crockett
Chief Executive

This newspaper is subject to NZ Press Council procedures. A complaint must first be directed in writing within one month of publication to the Opunake & Coastal News email address. If not satisfied with the response, the complaint may be referred to the Press Council, PO Box 10879, The Terrace, Wellington 6143. Or use the online complaint form at www.presscouncil.org.nz. Please include copies of the article and all correspondence with the publication.

meritcars

with distinction

VISIT WEBSITE MERITCARS.CO.NZ

493 DEVON STREET EAST, STRANDON, NEW PLYMOUTH
CALL US TODAY 06 281 1925

ALL ON ROAD COSTS INCLUDED PLUS TANK OF FUEL. ONE STOP SHOP FOR FINANCE, WARRANTIES & FREE SMILES

2015 + 2011 + 2007 TOYOTA HILUX 2WD 3.0 DIESEL D/C
SUPER STRONG & POPULAR NZ NEW
Five Speed, Diesel, Intercooled Turbo, ABS Brakes, Dual Airbags, Remote Central Locking, Electric Windows, Air Conditioning, Cruise Control, Towbar, Alloy Wheels. Two with canopies.



3 FROM \$15,995

2021 KIA CERATO LX 2.0 SPORTSHATCH
ONLY 6Km: Tiptronic Auto, Multi Airbags inc Side Curtain, ABS Brakes, Stability Control, Emergency Brake Assist, Adaptive Cruise Control, Hill Hold / Launch Assist, Lane Keeping Support System, '16' Alloys,



ONLY \$27,995

2010 NISSAN MURANO 250XV
VERY SMART & POPULAR HIGRADE SUV
Auto, CD Player/Reversing Camera/Side Camera, Bluetooth Phone, Climate Control Air Con, Leather Trim, Cruise Control, ABS Brakes, Air Bags, Electronic Stability Control, Driving Lights, Keyless Entry & Operation, Tinted Windows, Auto Lights, Dual Sunroof, Alloy Wheels, 80km



\$16,995

2017 TOYOTA COROLLA GX 1.8 AUTO NZ NEW
Tiptronic Automatic with Sport Mode, Stability Control, Traction Control, Multiple Airbags inc Side Curtain, ABS Brakes, Lane Departure Warning, Emergency Brake Assist, Air Con, Stereo with Bluetooth USB & Aux, Remote central Locking, Auto Lights with Auto High Beam, Cruise Control, NEW ALLOYS Reverse Camera. 80km



ONLY \$17,995

2014-2017 NISSAN X-TRAIL ST 7 SEATER NZ NEW
2.5, Tiptronic Auto, Daytime Running Lights, Auto Lights, Driving Lights, Cruise Control, Multi Airbags, Air Con, Stereo with USB, Smart Key With Push Button Start, ABS Brakes, Stability Control, Reverse Camera, Electric Windows, Electric Mirrors, Rear



3 FROM ONLY \$21,995

WE ARE YOUR ONE STOP SHOP FOR QUALITY VEHICLES FINANCE AND INSURANCE FROM ZERO DEPOSIT AND ALL ON ROAD COSTS INCLUDED IN PRICE THIS WEEKS SPECIAL

2013 HYUNDAI SANTA FE DIESEL TURBO 7 SEATER AWD. GREAT BUY.

Turbo Diesel, 4 Wheel Drive with 4WD Lock, Tiptronic Auto, Stability Control, ABS Brakes, Multi Airbags inc Side Curtain, Cruise Control, Reverse Camera, Hill Assist, Front & Rear Fog Lights, Auto Lights, 22" Alloys, Climate Air Con, Bluetooth, Tinted Windows, Towbar. 104km



ONLY \$25,995

2012 SUBARU IMPREZA SPORTS 1.6
Very Popular SPORTY HATCH Low Kms
Automatic, ABS Brakes , Air Conditioning, Dual Airbags, Driving Lights, Reversing Camera, Four Wheel Disc Brakes, Power Windows & Mirrors, Electronic Stability Control, Keyless Entry with Push Button Start, Tinted Windows, Alloy Wheels. 75km



\$12,995

2013-11 FORD TERRITORY TX & TS 7 SEATERS:
LOW kms, Great towing SUV



2 FROM ONLY \$14,995

2008 MAZDA 6 SPORT LTD 2.5 5DR NZ NEW:
Tiptronic Auto, Stability Control, ABS Brakes, Multiple Airbags, Dual Climate AirCon, Electric Fron Seat Adjustment with Drivers Memory, Leather Trim, Cruise Control, Electric Sunroof, Remote Central Locking, Auto lights, Auto Wipers, Alloy Wheels, Rear Spoiler, Stereo inc Aux. 111kms



TWO FROM ONLY \$11995

2010 SUZUKI SX4 GLX SPORT 86KMS NZ NEW:
Automatic, Double Overhead Cam, 16 Valve, Electronic Fuel Injection, Variable Valve Timing, Power Steering, Power Windows & Mirrors, Remote Central Locking, Air Conditioning, CD Player, ABS Brakes, Air Bags, Alloy Wheels,



ONLY SOLD \$11,995

2011 SUBARU EXIGA 7 SEATER
2.0 Tiptronic Auto, Remote Central Locking, Driving Lights, Electronic Stability Control, Rear Spoiler, Tinted Windows.

40KM ONLY \$11,995



2011 EXIGA SPORTS ONLY \$9,995

2005 CITROEN XSARA 1.6SX AUTO
Low kms ONE OWNER. Automatic, Power Steering, Power Windows, Power Mirrors, Central Locking, CD Player, ABS Brakes, Air Bags, Cruise Control.



ONLY \$5,995

2015 NISSAN CUBE 15X V SELECTION
55kms, Automatic, Power Windows & Mirrors, Climate Control Air Con, ABS Brakes, Air Bags, Keyless Entry with Push Button Start, Tinted Windows, Auto-Stop, Stability Control, Alloy Wheels



ONLY \$12,995

VEHICLES ARRIVING DAILY - SEE ONSITE SPECIALS FROM \$1500 VISIT MERITCARS.CO.NZ

GRAB A BARGAIN



LOCALLY OWNED & OPERATED

Ph 06 281 1925 • Chris Elliot 027 471 5972

Ph 06 757 3585 • Paul Butler 027 449 5382